



BLOSSOM INDUSTRIAL PARK SUITE 11803

11803 Starcrest Dr, San Antonio, TX 78247

FOR LEASE
22,820 SF Available



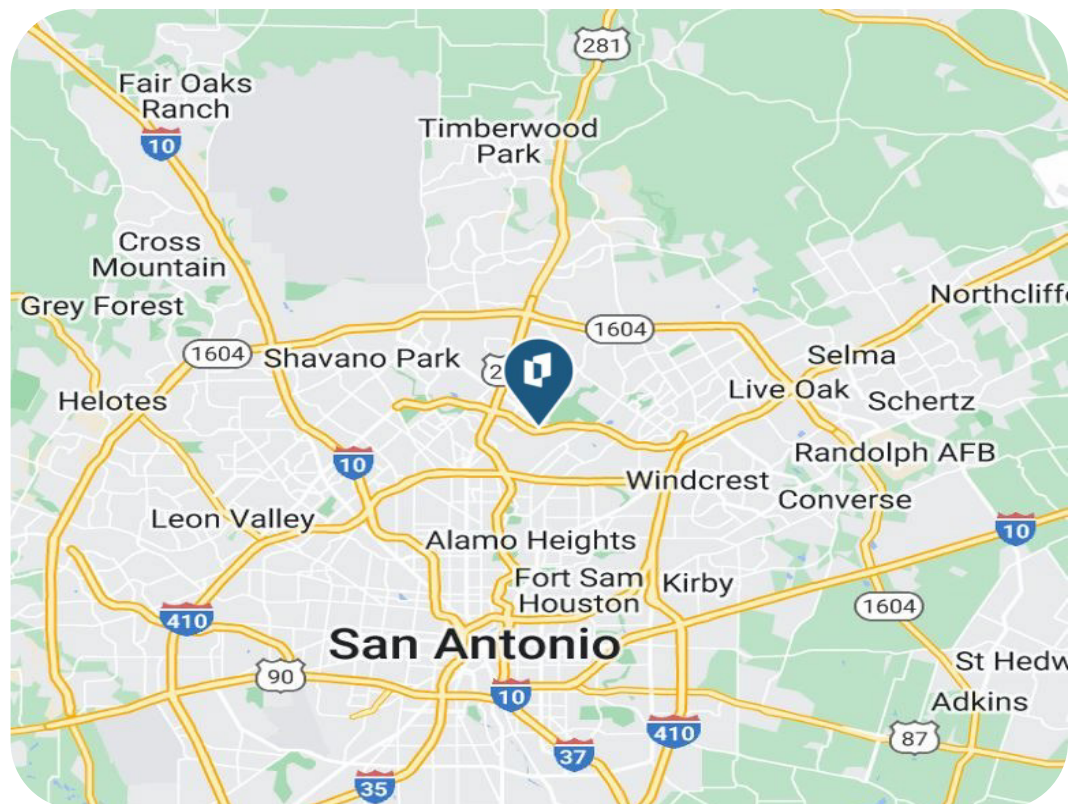
SERVICE CENTER

The information herein was obtained from sources believed reliable. However, Cavender & Hill Properties, Inc. makes no guarantees, warranties or representations as to the completeness or accuracy thereof. The presentation of this property is subject to errors, omissions, change of price or conditions prior to sale or lease or withdrawal without notice. All areas and dimensions are approximate.

BLOSSOM INDUSTRIAL PARK SUITE 11803

11803 Starcrest Dr, San Antonio, TX 78247

- 22,820 SF Available
- Demisable to 18,308 SF and 4,512 SF
- Business Park Environment
- 18' Clear Height
- Dock High and Ramped Loading
- Ample Parking
- Easily Accessible to Hwy 281 & Hwy I-35
- Adjacent to Wurzbach Parkway
- Minutes from San Antonio Intl. Airport



Property Details

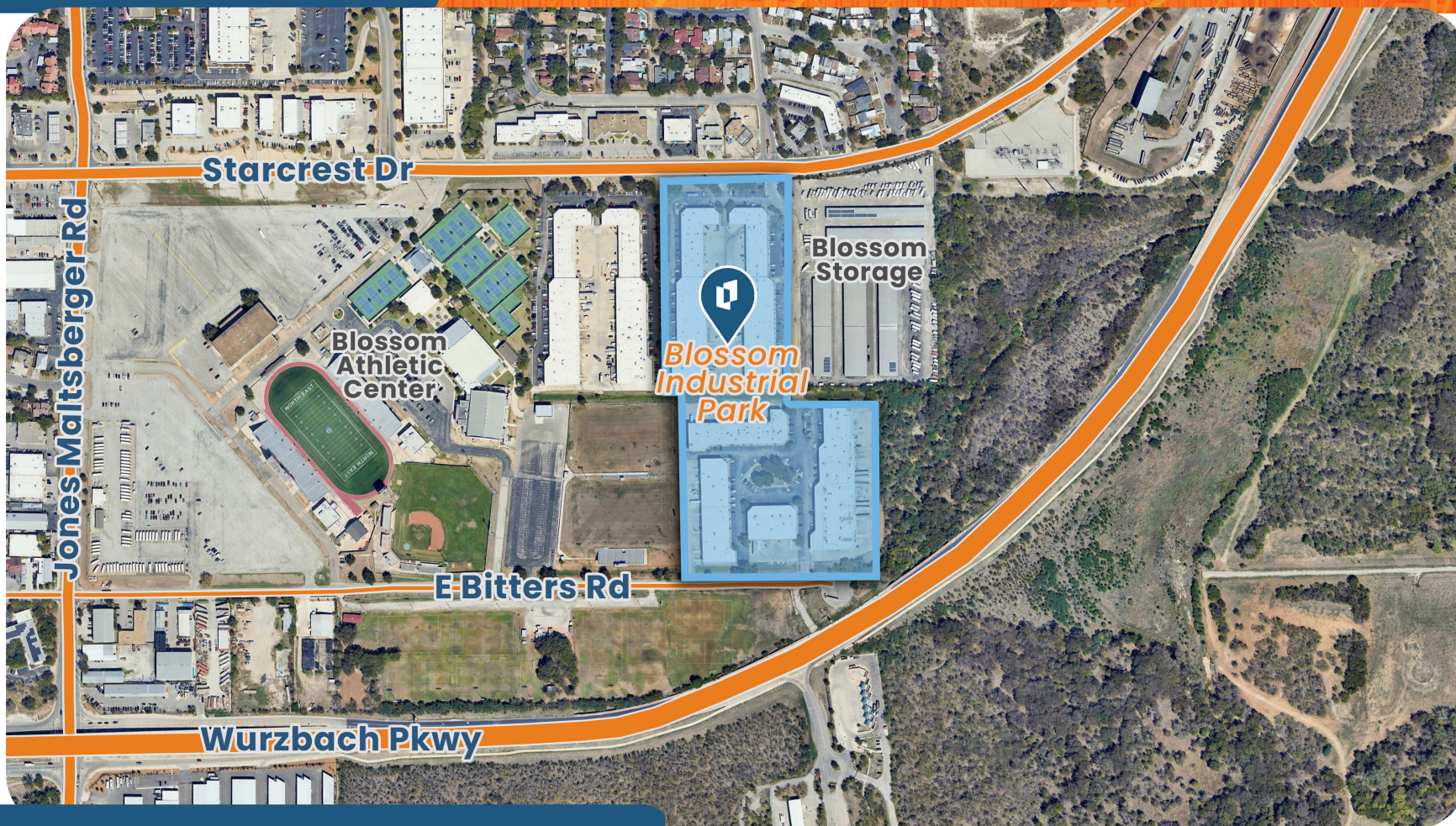
Ford Douglass
210.507.2699
fdouglass@cavenderhill.com

Hunter Z. Conger
210.323.3445
hconger@cavenderhill.com

Lee Jordan, SIOR
210.507.2710
ljordan@cavenderhill.com

BLOSSOM INDUSTRIAL PARK SUITE 11803

11803 Starcrest Dr, San Antonio, TX 78247



Aerial

Ford Douglass
210.507.2699
fdouglass@cavenderhill.com

Lee Jordan, SIOR
210.507.2710
ljordan@cavenderhill.com

Hunter Z. Conger
210.323.3445
hconger@cavenderhill.com



11803 Starcrest Dr, San Antonio, TX 78247



Site Plan

Ford Douglass
210.507.2699
fdouglass@cavenderhill.com

Hunter Z. Conger
210.323.3445
hconger@cavenderhill.com

Lee Jordan, SIOR
210.507.2710
ljordan@cavenderhill.com

The information herein was obtained from sources believed reliable. However, Cavender & Hill Properties, Inc. makes no guarantees, warranties or representations as to the completeness or accuracy thereof. The presentation of this property is subject to errors, omissions, change of price or conditions prior to sale or lease or withdrawal without notice. All areas and dimensions are approximate.

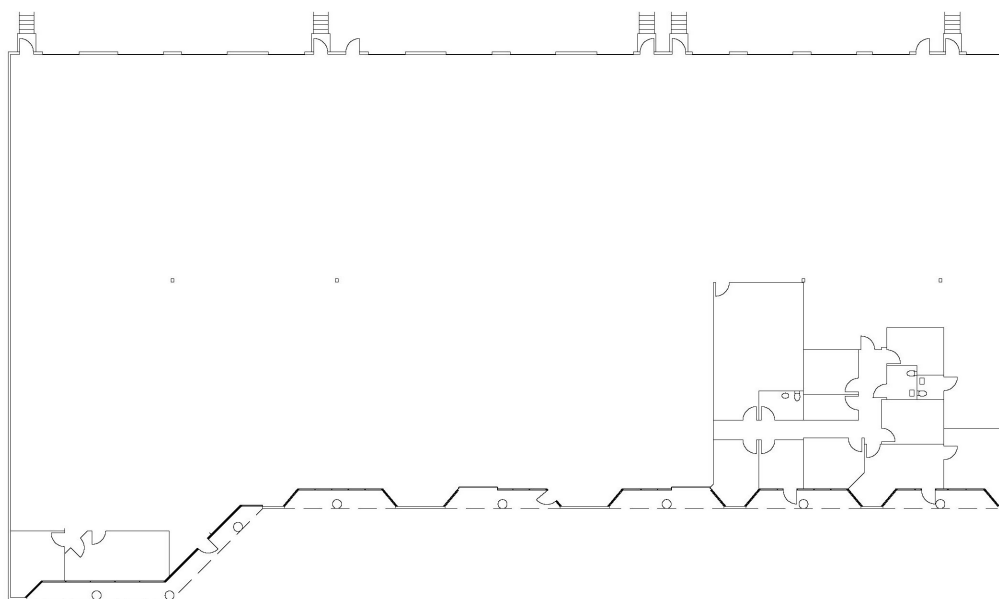


CAVENDER & HILL
PROPERTIES

BLOSSOM INDUSTRIAL PARK SUITE 11803

11803 Starcrest Dr, San Antonio, TX 78247

Floor Plan 22,820 SF



SPACE DETAILS

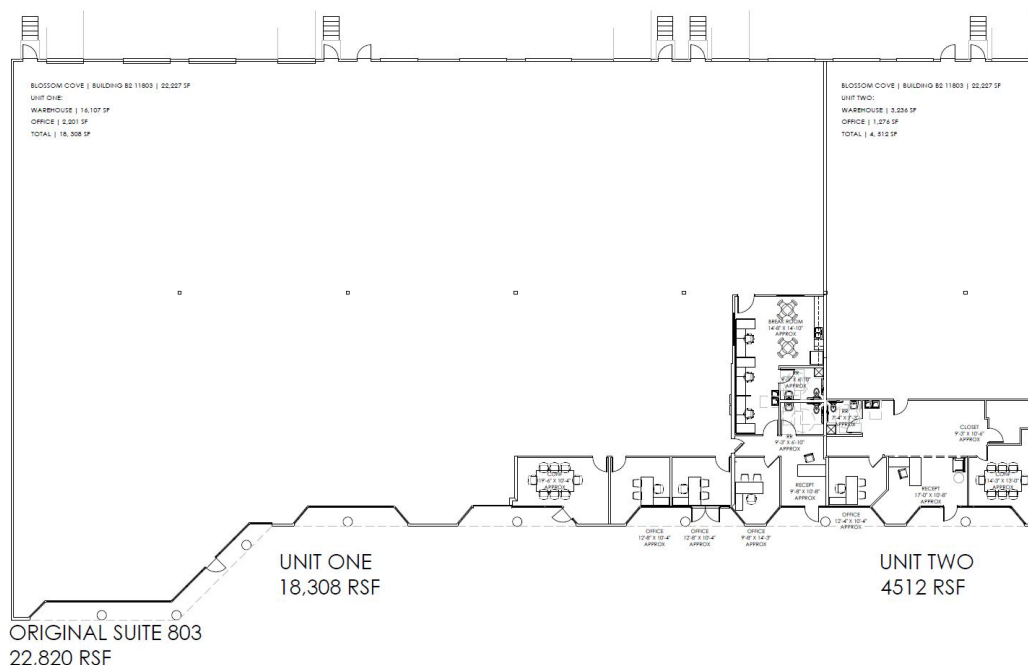
- Nine (9) Dock-High Doors
- Two (2) OH Ramp Doors
- Two (2) Semi Dock Doors
- End Cap Space
- 100% HVAC Warehouse
- Can Be Demised

The information herein was obtained from sources believed reliable. However, Cavender & Hill Properties, Inc. makes no guarantees, warranties or representations as to the completeness or accuracy thereof. The presentation of this property is subject to errors, omissions, change of price or conditions prior to sale or lease or withdrawal without notice. All areas and dimensions are approximate.

BLOSSOM INDUSTRIAL PARK SUITE 11803

11803 Starcrest Dr, San Antonio, TX 78247

Conceptual Plan 1 22,820 SF



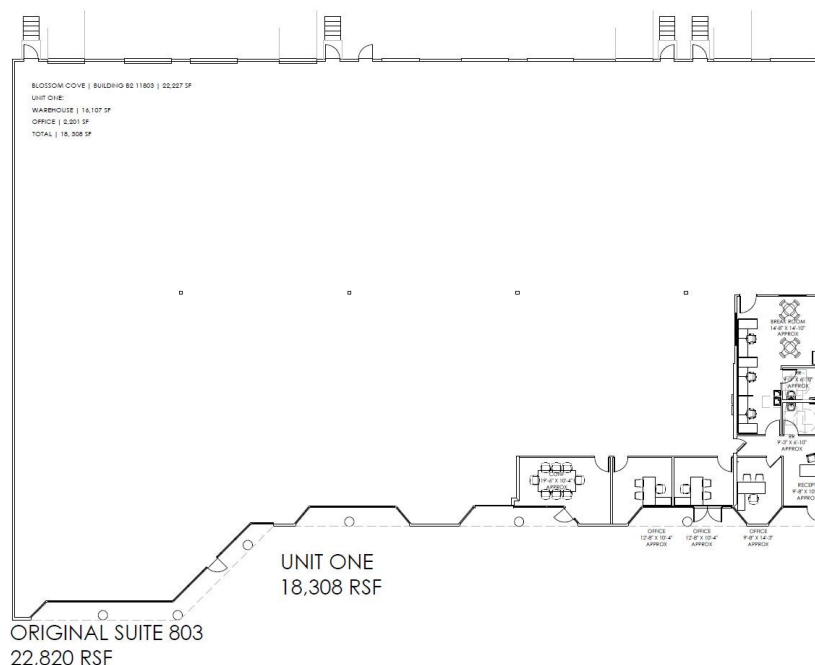
SPACE DETAILS

- Nine (9) Dock-High Doors
- Two (2) OH Ramp Doors
- Two (2) Semi Dock Doors
- End Cap Space
- 100% HVAC Warehouse

BLOSSOM INDUSTRIAL PARK SUITE 11803

11803 Starcrest Dr, San Antonio, TX 78247

Conceptual Plan 2 18,308 SF



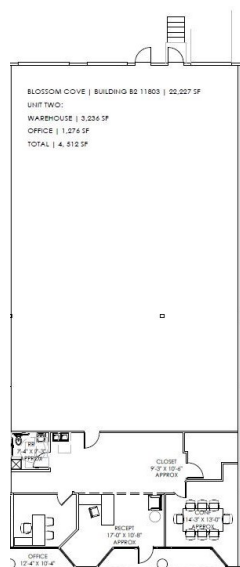
SPACE DETAILS

- 2,201 SF Office
- 16,107 SF Warehouse
- Six (6) Dock-High Doors
- Four (4) Docks with Ramps

BLOSSOM INDUSTRIAL PARK SUITE 11803

11803 Starcrest Dr, San Antonio, TX 78247

Conceptual Plan 3 4,512 SF



UNIT TWO
4512 RSF

SPACE DETAILS

- 1,276 SF Office
- 3,236 SF Warehouse
- Two (2) Dock-High Doors
- One (1) Dock with Ramp

Information About Brokerage Services

Texas law requires all real estate license holders to give the following information about brokerage services to prospective buyers, tenants, sellers and landlords.

TYPES OF REAL ESTATE LICENSE HOLDERS

- **A BROKER** is responsible for all brokerage activities, including acts performed by sales agents sponsored by the broker.
- **A SALES AGENT** must be sponsored by a broker and works with clients on behalf of the broker.

A BROKER'S MINIMUM DUTIES REQUIRED BY LAW

(A client is the person or party that the broker represents)

- Put the interests of the client above all others, including the broker's own interests;
- Inform the client of any material information about the property or transaction received by the broker;
- Answer the client's questions and present any offer to or counter-offer from the client; and
- Treat all parties to a real estate transaction honestly and fairly.

A LICENSE HOLDER CAN REPRESENT A PARTY IN A REAL ESTATE TRANSACTION

AS AGENT FOR OWNER (SELLER/LANDLORD):

The broker becomes the property owner's agent through an agreement with the owner, usually in a written listing to sell or property management agreement. An owner's agent must perform the broker's minimum duties above and must inform the owner of any material information about the property or transaction known by the agent, including information disclosed to the agent or subagent by the buyer or buyer's agent.

AS AGENT FOR BUYER/TENANT:

The broker becomes the buyer/tenant's agent by agreeing to represent the buyer, usually through a written representation agreement. A buyer's agent must perform the broker's minimum duties above and must inform the buyer of any material information about the property or transaction known by the agent, including information disclosed to the agent by the seller or seller's agent.

AS AGENT FOR BOTH - INTERMEDIARY:

To act as an intermediary between the parties the broker must first obtain the written agreement of each party to the transaction. The written agreement must state who will pay the broker and, in conspicuous bold or underlined print, set forth the broker's obligations as an intermediary. A broker who acts as an intermediary:

- Must treat all parties to the transaction impartially and fairly;
- May, with the parties' written consent, appoint a different license holder associated with the broker to each party (owner and buyer) to communicate with, provide opinions and advice to, and carry out the instructions of each party to the transaction.
- Must not, unless specifically authorized in writing to do so by the party, disclose:
 - that the owner will accept a price less than the written asking price;
 - that the buyer/tenant will pay a price greater than the price submitted in a written offer; and
 - any confidential information or any other information that a party specifically instructs the broker in writing not to disclose, unless required to do so by law.

AS SUBAGENT: A license holder acts as a subagent when aiding a buyer in a transaction without an agreement to represent the buyer. A subagent can assist the buyer but does not represent the buyer and must place the interests of the owner first.

TO AVOID DISPUTES, ALL AGREEMENTS BETWEEN YOU AND A BROKER SHOULD BE IN WRITING AND CLEARLY ESTABLISH:

- The broker's duties and responsibilities to you, and your obligations under the representation agreement.
- Who will pay the broker for services provided to you, when payment will be made and how the payment will be calculated.

LICENSE HOLDER CONTACT INFORMATION: This notice is being provided for information purposes. It does not create an obligation for you to use the broker's services. Please acknowledge receipt of this notice below and retain a copy for your records.

Information About Brokerage Services

Texas law requires all real estate license holders to give the following information about brokerage services to prospective buyers, tenants, sellers and landlords.

Cavender & Hill Properties, Inc.	438176	mcavender@cavenderhill.com	(210) 349-0900
Licensed Broker/Broker Firm Name or Primary Assumed Business Name	License No.	Email	Phone
James Mark Cavender	402640	mcavender@cavenderhill.com	(210) 349-0900
Designated Broker of Firm	License No.	Email	Phone
_____ Licensed Supervisor of Sales Agent/ Associate	_____ License No.	_____ Email	_____ Phone
_____ Sales Agent/Associate's Name	_____ License No.	_____ Email	_____ Phone
_____ Buyer/Tenant/Seller	_____ Landlord Initials	_____ Date	

Regulated by the Texas Real Estate Commission

Information available at www.trec.texas.gov

Cavender & Hill Properties, Inc. 7373 Broadway, Suite 501 San Antonio, TX 78209 Phone.210.349.0900 Fax.210.349.0931 IABS 1-0 TREC