

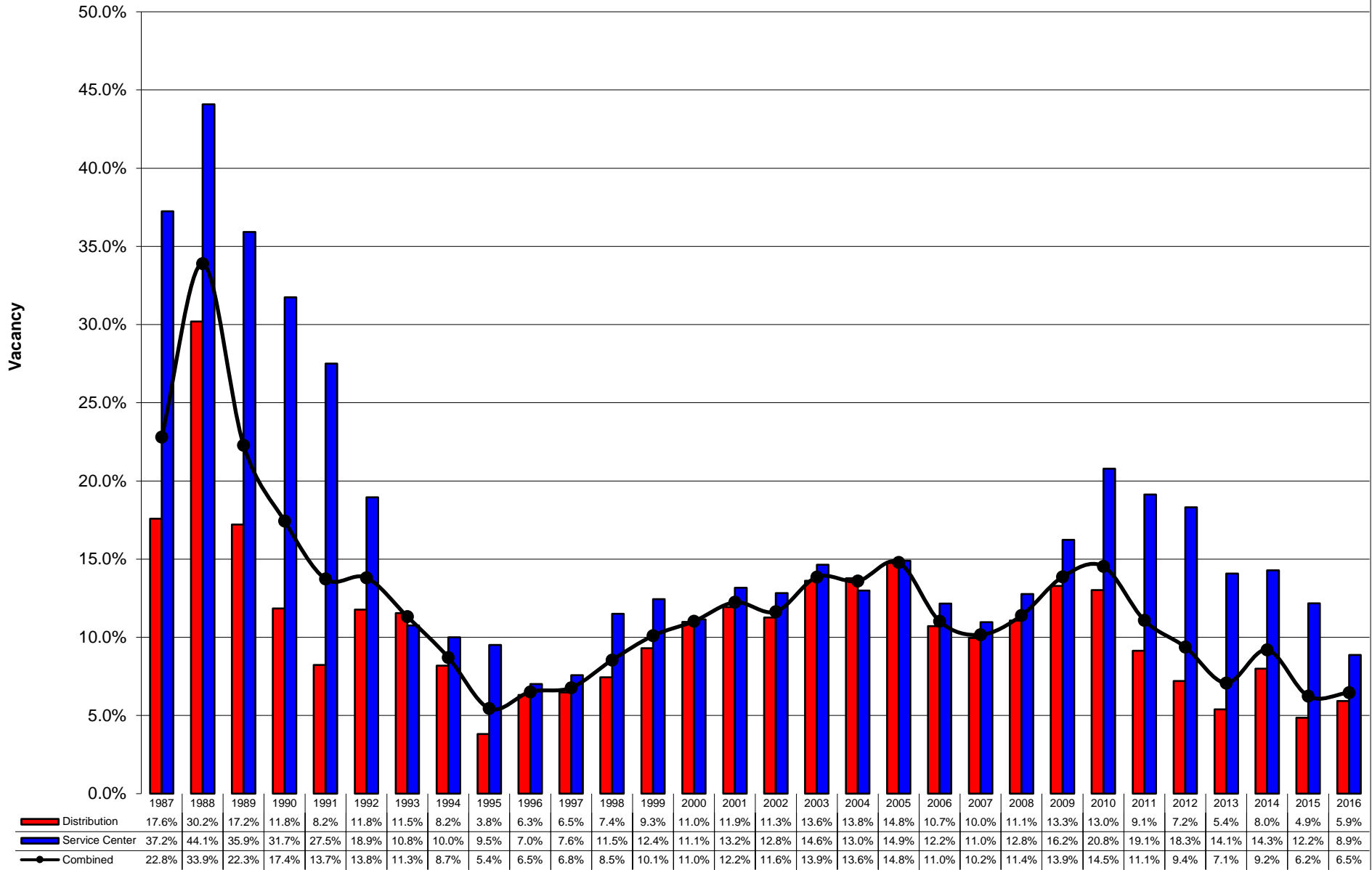
Cavender&Hill
 PROPERTIES, INC.
 Industrial Market Survey
 Year End 2016

DISTRIBUTION	TOTAL RSF	NEW INVENTORY	VACANCY 12/31/2005	VACANCY 12/31/2006	VACANCY 12/31/2007	VACANCY 12/31/2008	VACANCY 12/31/2009	VACANCY 12/31/2010	VACANCY 12/31/2011	VACANCY 12/31/2012	VACANCY 12/31/2013	VACANCY 12/31/2014	VACANCY 12/31/2015	VACANCY 12/31/2016	NET ABSORPTION	OCC%
CBD	233,394	0	71,370	0	0	0	28,548	54,734	55,660	40,460	28,548	0	22,400	22,400	0	90.4%
EAST	2,279,724	365,137	292,620	98,178	303,300	278,692	380,892	202,600	103,050	130,654	81,550	60,000	21,600	393,160	(6,423)	82.8%
NORTHCENTRAL	2,336,222	0	120,544	140,600	76,400	159,174	180,691	294,321	185,528	168,801	214,608	76,517	19,738	54,548	(34,810)	97.7%
NORTHEAST	12,874,957	415,104	1,256,777	1,074,261	969,289	1,224,337	1,236,731	1,284,989	1,002,374	655,516	466,847	824,675	649,629	588,020	476,713	95.4%
NORTHWEST	428,919	0	84,547	0	30,226	81,277	116,290	155,042	119,398	96,984	88,790	74,192	64,432	63,185	1,247	85.3%
SOUTHWEST	965,000	0	183,600	292,100	306,200	191,800	422,600	306,930	117,200	102,876	103,476	108,286	121,086	21,400	99,686	97.8%
WEST	1,308,108	0	200,096	101,138	60,100	79,176	109,365	129,614	120,330	153,678	27,792	400,265	54,928	66,595	(11,667)	94.9%
TOTALS	20,426,324	780,241	2,209,554	1,706,277	1,745,515	2,014,456	2,475,117	2,428,230	1,703,540	1,348,969	1,011,611	1,543,935	953,813	1,209,308	524,746	94.1%

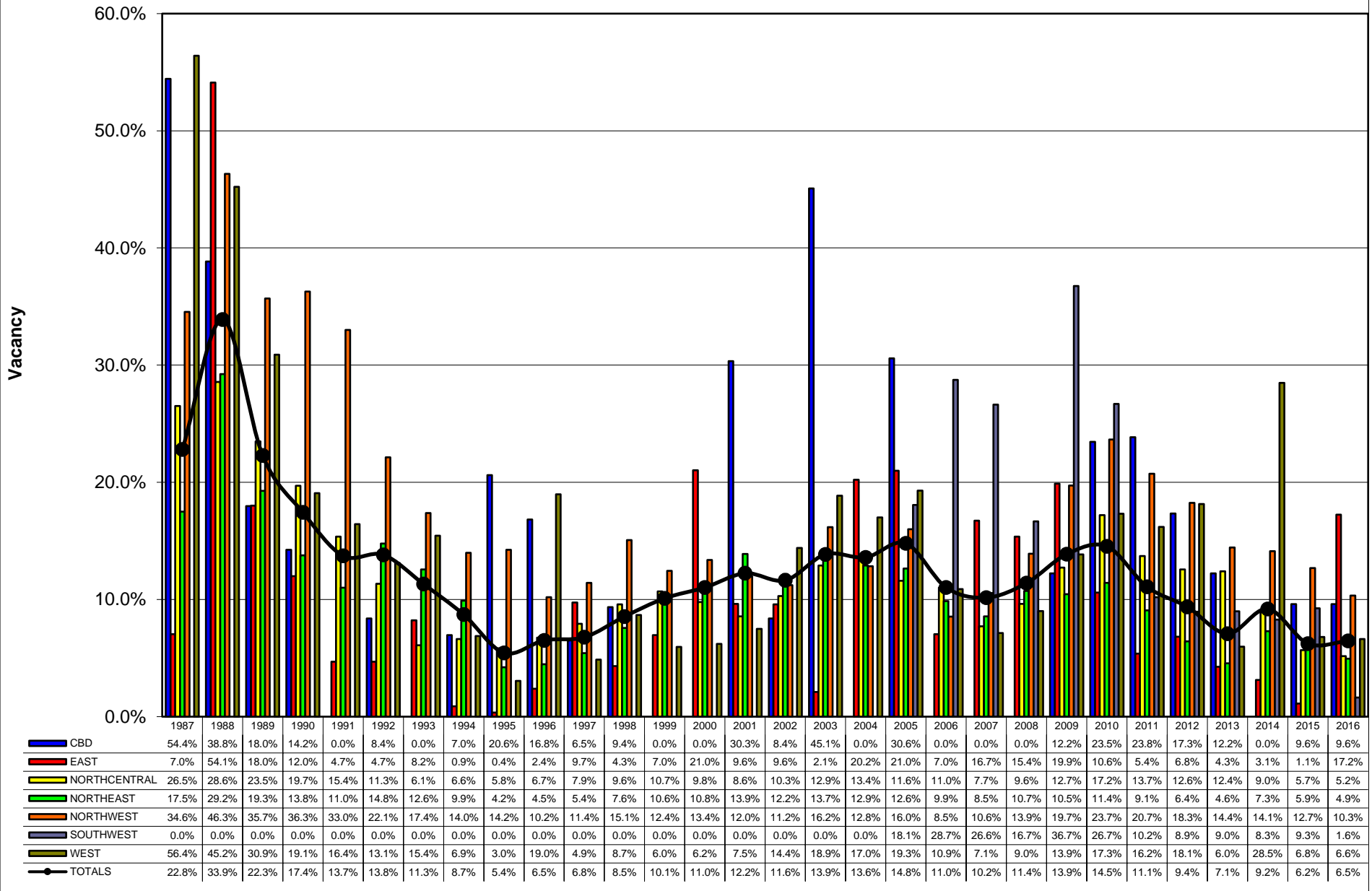
SERVICE CENTER	TOTAL RSF	NEW INVENTORY	VACANCY 12/31/2005	VACANCY 12/31/2006	VACANCY 12/31/2007	VACANCY 12/31/2008	VACANCY 12/31/2009	VACANCY 12/31/2010	VACANCY 12/31/2011	VACANCY 12/31/2012	VACANCY 12/31/2013	VACANCY 12/31/2014	VACANCY 12/31/2015	VACANCY 12/31/2016	NET ABSORPTION	OCC%
CBD	0	0	0	0	0	0	0	0	0	0	0	0	0	0	0	N/A
EAST	0	0	0	0	0	0	0	0	0	0	0	0	0	0	0	N/A
NORTHCENTRAL	2,229,720	0	294,835	269,548	221,090	254,831	367,253	449,600	407,390	388,454	343,437	333,023	239,313	181,065	58,248	91.9%
NORTHEAST	1,046,030	0	150,840	92,836	99,262	146,579	103,670	178,315	159,885	167,601	116,876	136,462	145,710	99,481	46,229	90.5%
NORTHWEST	1,019,016	0	141,947	120,939	122,624	120,035	169,419	187,507	180,716	167,356	120,217	130,342	119,122	86,563	32,559	91.5%
SOUTHWEST	0	0	0	0	0	0	0	0	0	0	0	0	0	0	0	N/A
WEST	288,904	0	40,744	34,667	38,635	45,349	89,945	119,581	112,729	107,348	58,042	54,649	53,590	39,315	14,275	86.4%
TOTALS	4,583,670	0	628,366	517,990	481,611	566,794	730,287	935,003	860,720	830,759	638,572	654,476	557,735	406,424	151,311	91.1%

COMBINED	TOTAL RSF	NEW INVENTORY	VACANCY 12/31/2005	VACANCY 12/31/2006	VACANCY 12/31/2007	VACANCY 12/31/2008	VACANCY 12/31/2009	VACANCY 12/31/2010	VACANCY 12/31/2011	VACANCY 12/31/2012	VACANCY 12/31/2013	VACANCY 12/31/2014	VACANCY 12/31/2015	VACANCY 12/31/2016	NET ABSORPTION	OCC%
CBD	233,394	0	71,370	0	0	0	28,548	54,734	55,660	40,460	28,548	0	22,400	22,400	0	90.4%
EAST	2,279,724	365,137	292,620	98,178	303,300	278,692	380,892	202,600	103,050	130,654	81,550	60,000	21,600	393,160	(6,423)	82.8%
NORTHCENTRAL	4,565,942	0	415,379	410,148	297,490	414,005	547,944	743,921	592,918	557,255	558,045	409,540	259,051	235,613	23,438	94.8%
NORTHEAST	13,920,987	415,104	1,407,617	1,167,097	1,068,551	1,370,916	1,340,401	1,463,304	1,162,259	823,117	583,723	961,137	795,339	687,501	522,942	95.1%
NORTHWEST	1,447,935	0	226,494	120,939	152,850	201,312	285,709	342,549	300,114	264,340	209,007	204,534	183,554	149,748	33,806	89.7%
SOUTHWEST	965,000	0	183,600	292,100	306,200	191,800	422,600	306,930	117,200	102,876	103,476	108,286	121,086	21,400	99,686	97.8%
WEST	1,597,012	0	240,840	135,805	98,735	124,525	199,310	249,195	233,059	261,026	85,834	454,914	108,518	105,910	2,608	93.4%
TOTALS	25,009,994	780,241	2,837,920	2,224,267	2,227,126	2,581,250	3,205,404	3,363,233	2,564,260	2,179,728	1,650,183	2,198,411	1,511,548	1,615,732	676,057	93.5%

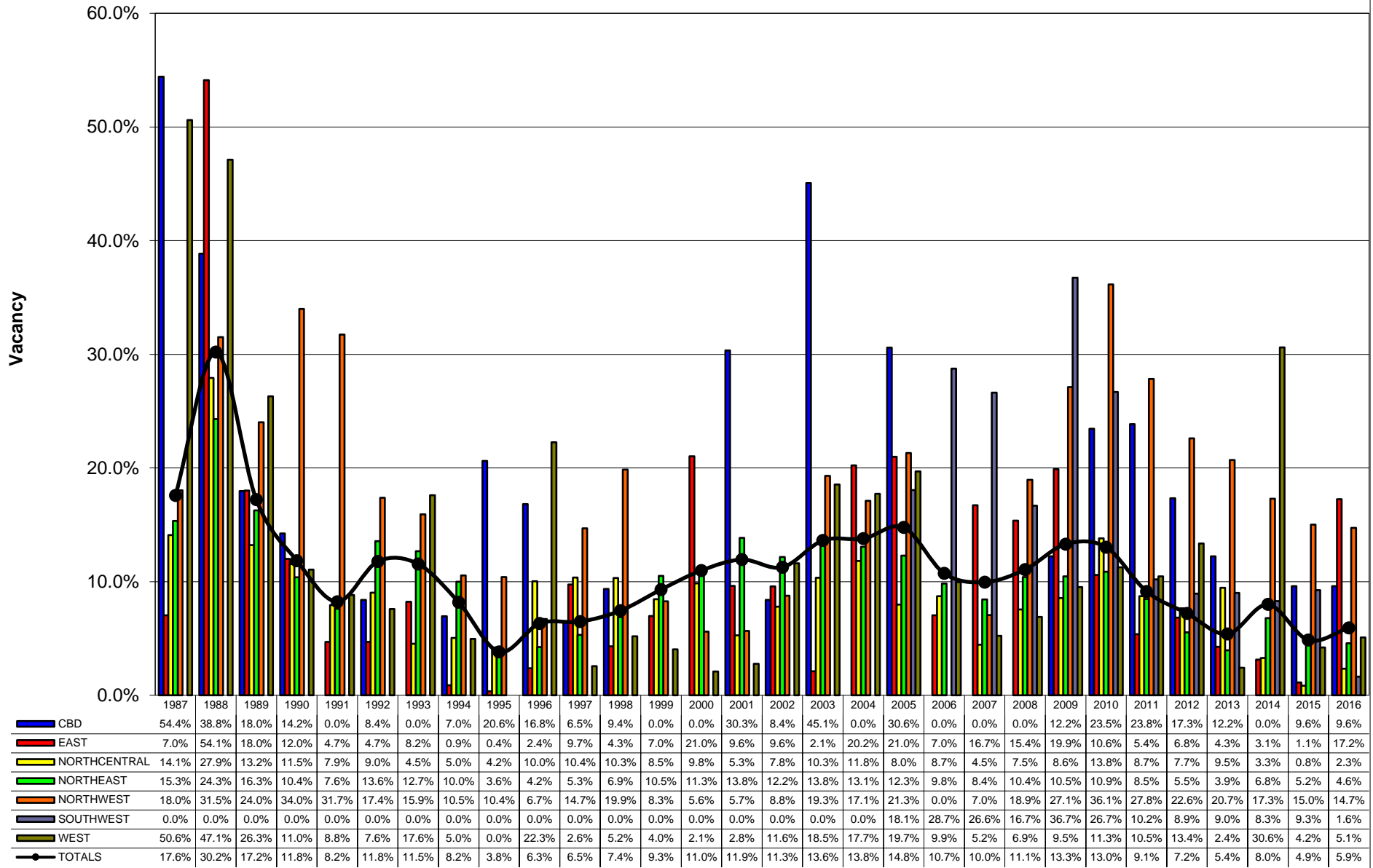
Cavender & Hill
 PROPERTIES, INC.
 Vacancy by Product Type



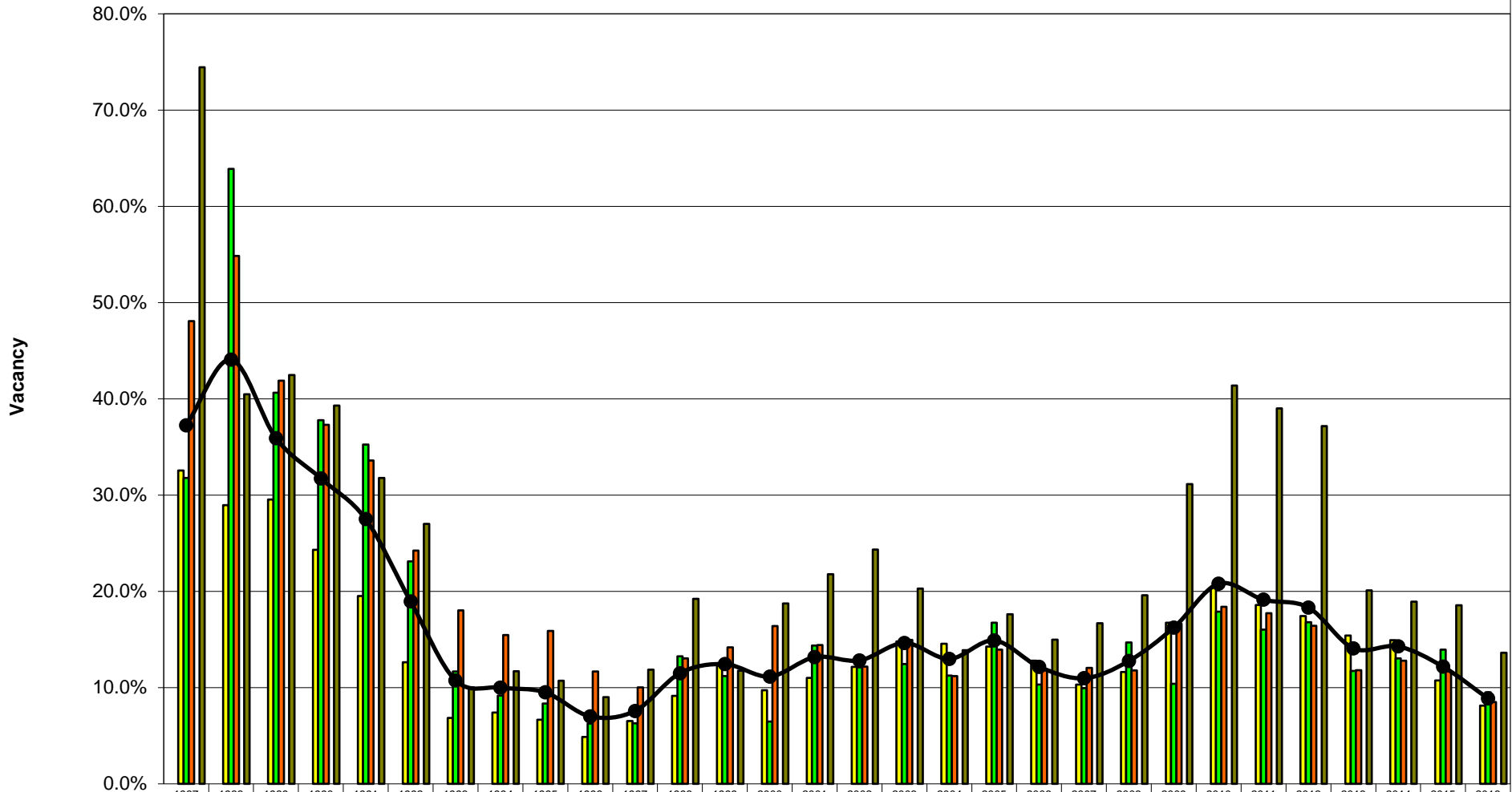
Vacancy by Submarket - Combined



Vacancy by Submarket - Distribution

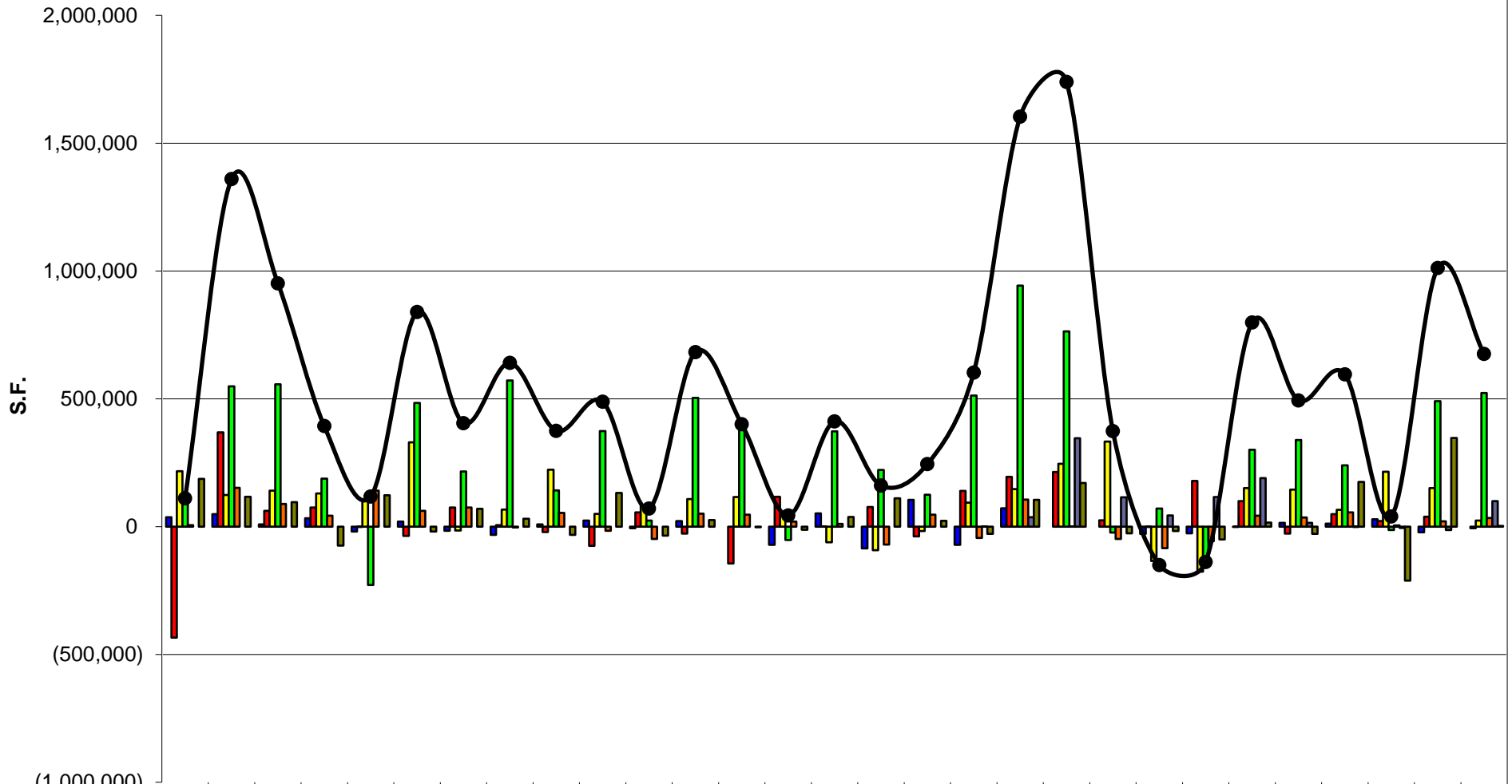


Vacancy by Submarket - Service Center



	1987	1988	1989	1990	1991	1992	1993	1994	1995	1996	1997	1998	1999	2000	2001	2002	2003	2004	2005	2006	2007	2008	2009	2010	2011	2012	2013	2014	2015	2016	
CBD	0.0%	0.0%	0.0%	0.0%	0.0%	0.0%	0.0%	0.0%	0.0%	0.0%	0.0%	0.0%	0.0%	0.0%	0.0%	0.0%	0.0%	0.0%	0.0%	0.0%	0.0%	0.0%	0.0%	0.0%	0.0%	0.0%	0.0%	0.0%	0.0%	0.0%	
EAST	0.0%	0.0%	0.0%	0.0%	0.0%	0.0%	0.0%	0.0%	0.0%	0.0%	0.0%	0.0%	0.0%	0.0%	0.0%	0.0%	0.0%	0.0%	0.0%	0.0%	0.0%	0.0%	0.0%	0.0%	0.0%	0.0%	0.0%	0.0%	0.0%	0.0%	0.0%
NORTHCENTRAL	32.5%	28.9%	29.5%	24.3%	19.5%	12.6%	6.9%	7.4%	6.7%	4.9%	6.5%	9.1%	12.3%	9.7%	11.0%	12.2%	14.8%	14.6%	14.3%	12.8%	10.3%	10.3%	11.6%	16.7%	20.5%	18.6%	17.4%	15.4%	14.9%	10.7%	8.1%
NORTHEAST	31.8%	63.9%	40.6%	37.8%	35.3%	23.1%	11.7%	9.2%	8.3%	6.3%	6.3%	13.2%	11.2%	6.5%	14.4%	12.1%	12.4%	11.2%	16.7%	10.3%	10.0%	14.7%	10.4%	17.9%	16.0%	16.8%	11.7%	13.0%	13.9%	9.5%	
NORTHWEST	48.1%	54.9%	41.9%	37.3%	33.6%	24.2%	18.0%	15.5%	15.9%	11.7%	10.0%	13.0%	14.2%	16.4%	14.4%	12.2%	15.0%	11.2%	13.9%	11.9%	12.0%	11.8%	16.6%	18.4%	17.7%	16.4%	11.8%	12.8%	11.7%	8.5%	
SOUTHWEST	0.0%	0.0%	0.0%	0.0%	0.0%	0.0%	0.0%	0.0%	0.0%	0.0%	0.0%	0.0%	0.0%	0.0%	0.0%	0.0%	0.0%	0.0%	0.0%	0.0%	0.0%	0.0%	0.0%	0.0%	0.0%	0.0%	0.0%	0.0%	0.0%	0.0%	0.0%
WEST	74.4%	40.5%	42.5%	39.3%	31.8%	27.0%	10.0%	11.7%	10.7%	9.0%	11.8%	19.2%	11.8%	18.7%	21.8%	24.3%	20.3%	13.9%	17.6%	15.0%	16.7%	19.6%	31.1%	41.4%	39.0%	37.2%	20.1%	18.9%	18.5%	13.6%	
TOTALS	37.2%	44.1%	35.9%	31.7%	27.5%	18.9%	10.8%	10.0%	9.5%	7.0%	7.6%	11.5%	12.4%	11.1%	13.2%	12.8%	14.6%	13.0%	14.9%	12.2%	11.0%	12.8%	16.2%	20.8%	19.1%	18.3%	14.1%	14.3%	12.2%	8.9%	

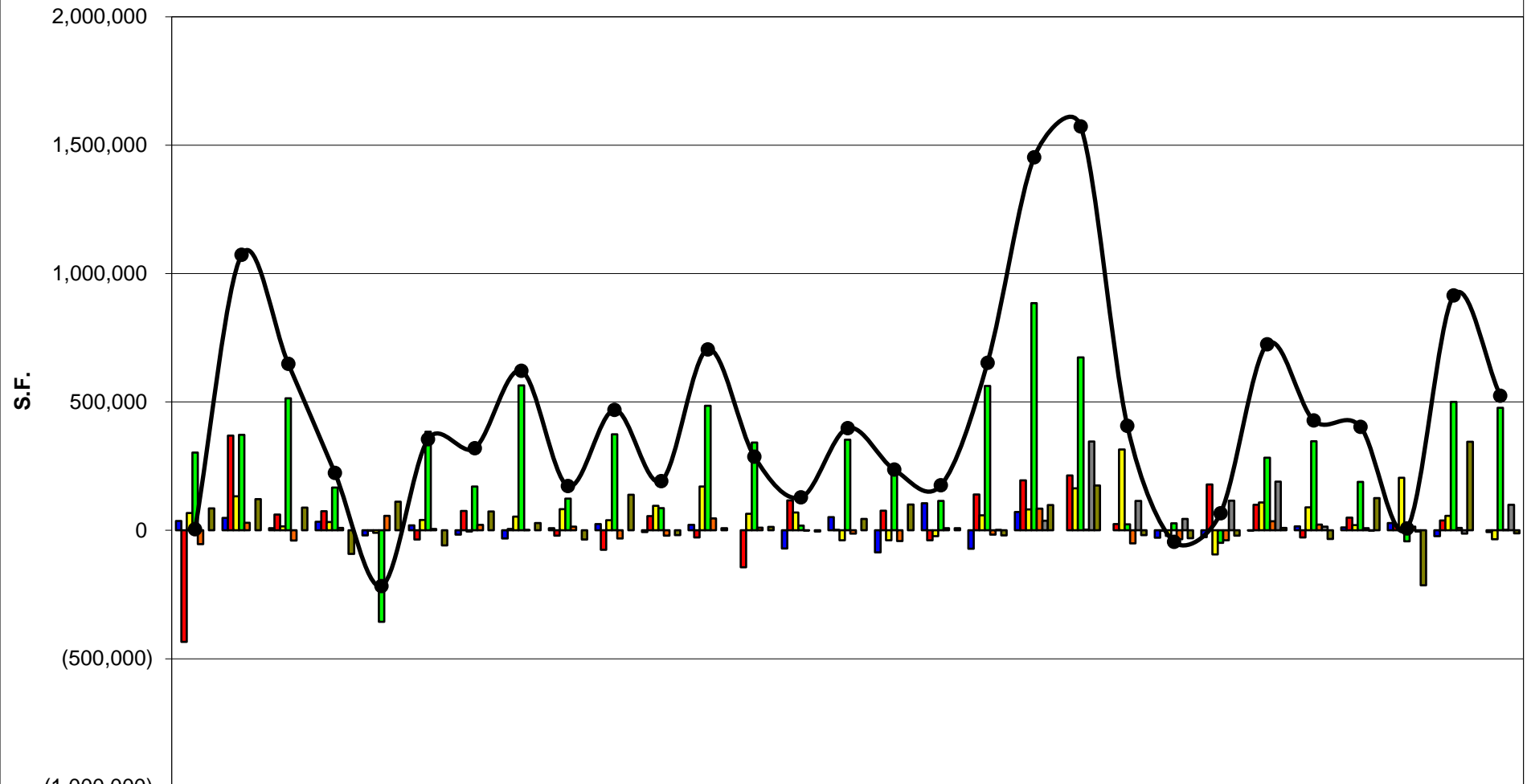
Absorption by Submarket - Combined



(1,000,000)

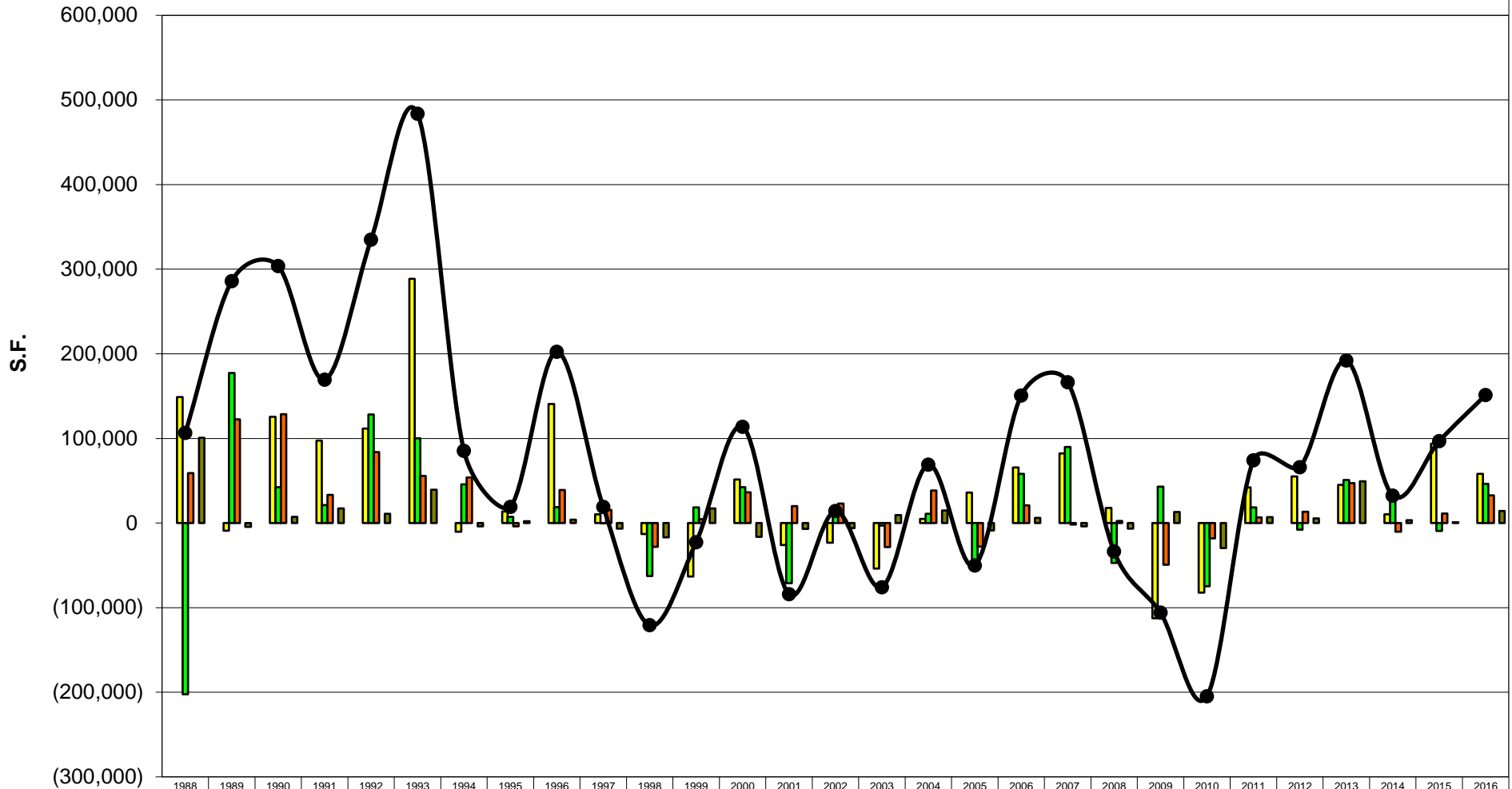
	1988	1989	1990	1991	1992	1993	1994	1995	1996	1997	1998	1999	2000	2001	2002	2003	2004	2005	2006	2007	2008	2009	2010	2011	2012	2013	2014	2015	2016
CBD	36,363	48,713	8,714	33,239	(19,560)	19,560	(16,226)	(31,880)	8,833	24,073	(6,626)	21,826	0	(70,814)	51,254	(85,643)	105,203	(71,370)	71,370	0	0	(28,548)	(26,186)	(926)	15,200	11,912	28,548	(22,400)	0
EAST	(434,593)	369,189	61,544	74,754	(132)	(36,006)	75,083	5,400	(20,810)	(75,244)	55,601	(27,168)	(143,825)	116,575	414	76,515	(38,489)	139,343	194,442	213,650	24,608	(1,000)	178,292	99,550	(27,604)	49,104	21,550	38,400	(6,423)
NORTHCENTRAL	216,765	123,814	140,602	129,985	101,687	329,419	(14,900)	67,054	222,887	49,911	82,100	107,446	115,619	43,146	(61,519)	(92,031)	(17,531)	94,214	147,205	245,708	332,448	(133,939)	(175,977)	151,003	144,885	65,380	214,910	150,489	23,438
NORTHEAST	100,134	548,901	556,259	187,612	(227,939)	483,768	216,104	572,134	142,081	374,179	24,178	504,244	384,180	(52,722)	373,052	221,919	125,122	513,063	942,871	763,627	(23,583)	70,515	(122,903)	301,045	339,142	239,394	(13,621)	490,610	522,942
NORTHWEST	5,628	152,135	88,987	42,337	140,741	61,441	75,212	(3,380)	53,764	(16,216)	(48,560)	50,693	46,854	19,671	10,707	(70,246)	47,153	(44,616)	105,555	489	(48,462)	(84,397)	(56,840)	42,435	35,774	55,333	4,473	20,980	33,806
SOUTHWEST	0	0	0	0	0	0	0	0	0	0	0	0	0	0	0	0	0	800	37,100	345,900	114,400	44,200	115,670	189,730	14,324	(600)	(4,810)	(12,800)	99,686
WEST	186,612	116,532	96,095	(74,525)	123,099	(18,920)	69,621	31,145	(31,923)	131,750	(35,500)	25,318	(2,443)	(11,823)	38,223	110,344	23,193	(28,593)	105,035	170,570	(25,790)	(17,285)	(49,885)	16,136	(27,967)	175,192	(211,012)	346,396	2,608
TOTALS	110,908	1,359,28	952,201	393,402	117,896	839,262	404,895	640,473	374,832	488,453	71,193	682,359	400,385	44,033	412,131	160,858	244,651	602,841	1,603,57	1,739,94	373,621	(150,454)	(137,829)	798,973	493,754	595,715	40,038	1,011,67	676,057

Absorption by Submarket - Distribution



	1988	1989	1990	1991	1992	1993	1994	1995	1996	1997	1998	1999	2000	2001	2002	2003	2004	2005	2006	2007	2008	2009	2010	2011	2012	2013	2014	2015	2016
CBD	36,363	48,713	8,714	33,239	(19,560)	19,560	(16,226)	(31,880)	8,833	24,073	(6,626)	21,826	0	(70,814)	51,254	(85,643)	105,203	(71,370)	71,370	0	0	(28,548)	(26,186)	(926)	15,200	11,912	28,548	(22,400)	0
EAST	(434,593)	369,189	61,544	74,754	(132)	(36,006)	75,083	5,400	(20,810)	(75,244)	55,601	(27,168)	(143,825)	116,575	414	76,515	(38,489)	139,343	194,442	213,650	24,608	(1,000)	178,292	99,550	(27,604)	49,104	21,550	38,400	(6,423)
NORTHCENTRAL	67,782	132,921	15,006	32,608	(9,972)	40,738	(4,700)	53,550	82,220	39,623	95,123	170,595	64,299	69,270	(38,255)	(38,352)	(22,426)	58,174	81,494	163,500	314,672	(21,517)	(93,630)	108,793	89,801	20,363	204,496	56,779	(34,810)
NORTHEAST	302,587	371,598	513,946	166,370	(356,229)	383,630	170,468	564,753	123,398	374,301	86,917	485,667	341,847	18,324	352,684	224,913	114,257	562,639	884,867	673,653	23,734	27,606	(48,258)	282,615	346,858	188,669	(42,466)	499,858	476,713
NORTHWEST	(53,394)	29,683	(39,528)	8,933	56,906	5,750	21,322	607	14,621	(31,641)	(20,532)	46,023	10,550	(271)	(12,300)	(41,757)	8,678	(16,697)	84,547	2,174	(51,051)	(35,013)	(38,752)	35,644	22,414	8,194	14,598	9,760	1,247
SOUTHWEST	0	0	0	0	0	0	0	0	0	0	0	0	0	0	0	0	0	800	37,100	345,900	114,400	44,200	115,670	189,730	14,324	(600)	(4,810)	(12,800)	99,686
WEST	85,770	121,153	88,756	(91,938)	112,096	(58,264)	73,536	28,857	(35,887)	138,330	(18,475)	8,100	13,717	(4,832)	44,140	100,987	8,367	(19,962)	98,958	174,538	(19,076)	(30,189)	(20,249)	9,284	(33,348)	125,886	(214,405)	345,337	(11,667)
TOTALS	4,514	1,073,25	648,438	223,966	(216,891)	355,408	319,483	621,287	172,375	469,442	192,008	705,043	286,588	128,252	397,937	236,663	175,590	652,927	1,452,77	1,573,41	407,287	(44,461)	66,887	724,690	427,645	403,528	7,511	914,934	524,746

Absorption by Submarket - Service Center



	1988	1989	1990	1991	1992	1993	1994	1995	1996	1997	1998	1999	2000	2001	2002	2003	2004	2005	2006	2007	2008	2009	2010	2011	2012	2013	2014	2015	2016	
CBD	0	0	0	0	0	0	0	0	0	0	0	0	0	0	0	0	0	0	0	0	0	0	0	0	0	0	0	0	0	
EAST	0	0	0	0	0	0	0	0	0	0	0	0	0	0	0	0	0	0	0	0	0	0	0	0	0	0	0	0	0	0
NORTHCENTRAL	148,983	(9,107)	125,596	97,377	111,659	288,681	(10,200)	13,504	140,667	10,288	(13,023)	(63,149)	51,320	(26,124)	(23,264)	(53,679)	4,895	36,040	65,711	82,208	17,776	(112,422)	(82,347)	42,210	55,084	45,017	10,414	93,710	58,248	
NORTHEAST	(202,453)	177,303	42,313	21,242	128,290	100,138	45,636	7,381	18,683	(122)	(62,739)	18,577	42,333	(71,046)	20,368	(2,994)	10,865	(49,576)	58,004	89,974	(47,317)	42,909	(74,645)	18,430	(7,716)	50,725	28,845	(9,248)	46,229	
NORTHWEST	59,022	122,452	128,515	33,404	83,835	55,691	53,890	(3,987)	39,143	15,425	(28,028)	4,670	36,304	19,942	23,007	(28,489)	38,475	(27,919)	21,008	(1,685)	2,589	(49,384)	(18,088)	6,791	13,360	47,139	(10,125)	11,220	32,559	
SOUTHWEST	0	0	0	0	0	0	0	0	0	0	0	0	0	0	0	0	0	0	0	0	0	0	0	0	0	0	0	0	0	0
WEST	100,842	(4,621)	7,339	17,413	11,003	39,344	(3,915)	2,288	3,964	(6,580)	(17,025)	17,218	(16,160)	(6,991)	(5,917)	9,357	14,826	(8,631)	6,077	(3,968)	(6,714)	12,904	(29,636)	6,852	5,381	49,306	3,393	1,059	14,275	
TOTALS	106,394	286,027	303,763	169,436	334,786	483,854	85,412	19,186	202,457	19,011	(120,815)	(22,684)	113,797	(84,219)	14,194	(75,805)	69,061	(50,086)	150,800	166,529	(33,666)	(105,993)	(204,716)	74,283	66,109	192,187	32,527	96,741	151,311	

Cavender & Hill
PROPERTIES, INC.
Industrial Market Survey
2016 Year End

TYPE	SUBMKT	PROJECT	RSF	NEW INVENTORY	VACANT 12/31/06	VACANT 12/31/07	VACANT 12/31/08	VACANT 12/31/09	VACANT 12/31/10	VACANT 12/31/11	VACANT 12/31/12	VACANT 12/31/13	VACANT 12/31/14	VACANT 12/31/15	VACANT 12/31/16	NET ABSORPTION	%OCCUPIED
DISTRIBUTION	CBD	CENTRAL BUSINESS DISTRICT	88,126		0	0	0	0	26,186	26,186	26,186	0	0	0	0	0	100.0%
DISTRIBUTION	CBD	CHESTNUT DISTRIBUTION	85,643		0	0	0	28,548	28,548	14,274	14,274	28,548	0	0	0	0	100.0%
DISTRIBUTION	CBD	I-10 CENTRAL 1	59,625		0	0	0	0	0	15,200	0	0	0	22,400	22,400	0	62.4%
	CBD Total		233,394	-	0	0	0	28,548	54,734	55,660	40,460	28,548	0	22,400	22,400	0	90.4%
DISTRIBUTION	East	1228 CORNERWAY	180,000			180,000	0	0	0	0	0	0	0	0	0	0	100.0%
DISTRIBUTION	East	1310 CORNERWAY	108,800	108,800											54,400	54,400	50.0%
DISTRIBUTION	East	5003 STOUT DRIVE	166,000		0	0	0	0	0	0	0	0	0	0	166,000	(166,000)	0.0%
DISTRIBUTION	East	5410 DIETRICH	112,200	112,200											71,400	40,800	36.4%
DISTRIBUTION	East	5411 IH-10 EAST	108,000			108,000	72,000	72,000	72,000	0	0	60,000	60,000	0	0	0	100.0%
DISTRIBUTION	East	CITY PARK EAST A	40,800		10,297	0	0	8,501	0	0	0	0	0	0	0	0	100.0%
DISTRIBUTION	East	CITY PARK EAST B-D	212,100		53,527	0	0	44,193	0	21,600	40,940	0	0	21,600	0	21,600	100.0%
DISTRIBUTION	East	CITY PARK EAST E	101,200					55,000	55,000	0	46,200	0	0	0	0	0	100.0%
DISTRIBUTION	East	CORNERSTONE INDUSTRIAL CENTER 1	187,932		0	0	28,252	28,252	0	0	0	0	0	0	0	0	100.0%
DISTRIBUTION	East	CORNERSTONE INDUSTRIAL CENTER 2	130,772			0	0	45,053	0	0	0	0	0	0	0	0	100.0%
DISTRIBUTION	East	CORNERSTONE INDUSTRIAL CENTER 3	144,137	144,137											50,760	93,377	64.8%
DISTRIBUTION	East	DIRECTOR DRIVE BUSINESS PARK 1	96,030		12,804	0	0	0	0	0	0	0	0	0	0	0	100.0%
DISTRIBUTION	East	DIRECTOR DRIVE BUSINESS PARK 2	91,845		0	0	0	0	0	0	0	0	0	0	0	0	100.0%
DISTRIBUTION	East	INTERCHANGE EAST IND. PARK	214,308		0	0	147,840	47,793	0	0	0	0	0	0	0	0	100.0%
DISTRIBUTION	East	INTERSTATE BUS PARK 1	50,400		0	0	0	21,600	12,600	0	0	0	0	0	21,600	(21,600)	57.1%
DISTRIBUTION	East	INTERSTATE BUSINESS PARK 2,3&4	151,200		0	15,300	30,600	58,500	63,000	36,000	21,964	0	0	0	0	0	100.0%
DISTRIBUTION	East	INTERSTATE BUSINESS PARK 5	184,000		21,550	0	0	0	0	45,450	21,550	21,550	0	0	29,000	(29,000)	84.2%
	East Total		2,279,724	365,137	98,178	303,300	278,692	380,892	202,600	103,050	130,654	81,550	60,000	21,600	393,160	(6,423)	82.8%
DISTRIBUTION	Northcentral	101 E. NAKOMA	65,000		0	0	0	0	0	0	0	0	0	0	0	0	100.0%
DISTRIBUTION	Northcentral	12029 WARFIELD	30,497		0	0	0	3,800	0	0	0	30,497	0	0	0	0	100.0%
DISTRIBUTION	Northcentral	2400 BROCKTON	40,000		0	0	0	0	10,000	10,000	20,000	10,000	10,000	0	0	0	100.0%
DISTRIBUTION	Northcentral	2401 BROCKTON	48,008		0	0	0	0	0	0	0	0	0	0	0	0	100.0%
DISTRIBUTION	Northcentral	2416 BROCKTON	28,800		0	0	0	6,400	22,400	6,400	0	0	0	6,400	6,400	0	77.8%
DISTRIBUTION	Northcentral	2425 BROCKTON	57,000		0	0	0	0	0	0	0	0	0	0	0	0	100.0%
DISTRIBUTION	Northcentral	2434 BROCKTON	22,400		3,200	0	6,400	12,800	9,600	0	0	0	0	0	0	0	100.0%
DISTRIBUTION	Northcentral	500 SANDAU	80,195		3,000	6,900	6,900	9,378	16,000	28,132	28,132	30,000	4,508	7,738	3,748	3,990	95.3%
DISTRIBUTION	Northcentral	9311 BROADWAY	148,900				40,150	71,900	48,900	24,000	23,704	0	0	0	0	0	100.0%
DISTRIBUTION	Northcentral	ARION 08	85,000		0	0	0	0	0	0	0	0	0	0	0	0	100.0%
DISTRIBUTION	Northcentral	ARION 08A	20,000						20,000	0	0	0	0	0	0	0	100.0%
DISTRIBUTION	Northcentral	ARION 09	48,000		0	0	0	0	0	0	0	0	0	0	0	0	100.0%
DISTRIBUTION	Northcentral	ARION 10	96,000		16,000	12,800	12,800	0	0	0	0	0	0	0	0	0	100.0%
DISTRIBUTION	Northcentral	ARION 11	48,000		0	0	0	0	0	0	0	0	0	0	0	0	100.0%
DISTRIBUTION	Northcentral	ARION 12	64,000		0	0	0	0	0	0	0	0	0	0	0	0	100.0%
DISTRIBUTION	Northcentral	ARION 13	43,200		0	0	0	0	0	0	12,000	0	0	0	0	0	100.0%
DISTRIBUTION	Northcentral	ARION 14	65,850		0	0	0	0	0	0	0	0	0	0	0	0	100.0%
DISTRIBUTION	Northcentral	ARION 15	50,000		0	0	0	0	0	0	0	0	0	0	0	0	100.0%
DISTRIBUTION	Northcentral	ARION 16	63,600		0	0	0	0	0	0	0	0	0	0	0	0	100.0%
DISTRIBUTION	Northcentral	BULVERDE BUSINESS PARK A	35,700		0	0	0	0	0	0	0	0	0	0	0	0	100.0%
DISTRIBUTION	Northcentral	BULVERDE BUSINESS PARK B	35,700			35,700	0	0	0	0	0	0	0	0	35,700	(35,700)	0.0%
DISTRIBUTION	Northcentral	INTERPARK 14	48,104		10,000	10,000	9,000	9,917	16,435	0	0	0	0	0	0	0	100.0%
DISTRIBUTION	Northcentral	ISOM BUSINESS CENTER	175,200		71,500	11,000	26,346	0	31,896	26,296	32,382	16,600	5,600	5,600	0	5,600	100.0%
DISTRIBUTION	Northcentral	SENTINEL BUSINESS PARK	328,412		12,900	0	11,764	27,541	77,919	76,900	32,250	27,900	56,409	0	8,700	(8,700)	97.4%
DISTRIBUTION	Northcentral	THOUSAND OAKS BUSINESS PARK 2	73,074								20,333	20,333	0	0	0	0	100.0%

Cavender & Hill
PROPERTIES, INC.
Industrial Market Survey
2016 Year End

TYPE	SUBMKT	PROJECT	RSF	NEW INVENTORY	VACANT 12/31/06	VACANT 12/31/07	VACANT 12/31/08	VACANT 12/31/09	VACANT 12/31/10	VACANT 12/31/11	VACANT 12/31/12	VACANT 12/31/13	VACANT 12/31/14	VACANT 12/31/15	VACANT 12/31/16	NET ABSORPTION	%OCCUPIED
DISTRIBUTION	Northcentral	THOUSAND OAKS BUSINESS PARK 3	66,170									57,016	0	0	0	0	100.0%
DISTRIBUTION	Northcentral	THOUSAND OAKS BUSINESS PARK 4	66,405										0	0	0	0	100.0%
DISTRIBUTION	Northcentral	WETMORE BUSINESS CENTER 2	57,600		19,200	0	0	0	9,600	0	0	0	0	0	0	0	100.0%
DISTRIBUTION	Northcentral	WETMORE BUSINESS CENTER 3	51,764		4,800	0	0	13,841	0	0	0	0	0	0	0	0	100.0%
DISTRIBUTION	Northcentral	WETMORE BUSINESS CENTER 4	45,097		0	0	0	0	0	13,800	0	0	0	0	0	0	100.0%
DISTRIBUTION	Northcentral	WETMORE BUSINESS CENTER 6	55,346				25,114	25,114	10,871	0	0	0	0	0	0	0	100.0%
DISTRIBUTION	Northcentral	WETMORE BUSINESS CENTER 7	69,000				0	0	0	0	0	22,262	0	0	0	0	100.0%
DISTRIBUTION	Northcentral	WETMORE BUSINESS CENTER 8	124,200				20,700	0	20,700	0	0	0	0	0	0	0	100.0%
	Northcentral Total		2,336,222	-	140,600	76,400	159,174	180,691	294,321	185,528	168,801	214,608	76,517	19,738	54,548	(34,810)	97.7%
DISTRIBUTION	Northeast	1012 ASSEMBLY CIRCLE	59,200				59,200	59,200	36,000	35,200	0	0	0	0	0	0	100.0%
DISTRIBUTION	Northeast	10711 DISTRIBUTION 1 & 2	168,993		0	0	0	0	0	0	0	0	12,800	38,400	51,200	(12,800)	69.7%
DISTRIBUTION	Northeast	17357 BELL NORTH DRIVE	43,200		43,200	30,000	16,800	7,600	0	0	0	0	0	5,600	0	5,600	100.0%
DISTRIBUTION	Northeast	3535 IH35	70,050		0	0	30,750	38,000	38,550	38,550	13,250	13,250	38,550	37,607	44,640	(7,033)	36.3%
DISTRIBUTION	Northeast	5004 SPACE CENTER DRIVE	101,500		40,000	0	40,000	40,000	40,000	40,000	0	0	0	0	0	0	100.0%
DISTRIBUTION	Northeast	6023 CORRIDOR PARKWAY	51,074		24,464	0	0	0	0	0	0	0	0	0	0	0	100.0%
DISTRIBUTION	Northeast	610 LANARK	235,420		116,400	43,800	43,800	110,800	168,168	129,600	18,000	17,820	14,768	33,044	0	33,044	100.0%
DISTRIBUTION	Northeast	6411 TRICOUNTY PARKWAY	139,881			88,804	0	60,840	0	0	0	0	0	0	0	0	100.0%
DISTRIBUTION	Northeast	6413 TRICOUNTY PARKWAY	132,000		0	0	0	0	0	0	0	0	0	0	0	0	100.0%
DISTRIBUTION	Northeast	9850 DOERR LANE	213,864	213,864											0	213,864	100.0%
DISTRIBUTION	Northeast	ATT CENTER PARKWAY 4	104,000		104,000	0	0	0	0	0	0	0	0	0	0	0	100.0%
DISTRIBUTION	Northeast	ATT CENTER PARKWAY 5	48,000		0	0	0	0	0	0	48,000	0	0	0	0	0	100.0%
DISTRIBUTION	Northeast	BINZ-ENGLEMAN CENTER	226,800		11,200	13,339	26,600	39,200	38,000	32,200	22,400	27,500	0	0	15,400	(15,400)	93.2%
DISTRIBUTION	Northeast	BINZ-ENGLEMAN DIST. CTR. 1-3	262,292		0	0	0	31,060	0	39,385	40,000	0	0	0	0	0	100.0%
DISTRIBUTION	Northeast	CENTER PARK	116,717		19,183	12,034	12,034	15,725	15,725	20,432	15,854	0	15,725	15,725	0	15,725	100.0%
DISTRIBUTION	Northeast	COLISEUM DISTRIBUTION 1	208,000		0	0	0	0	0	0	0	0	0	0	0	0	100.0%
DISTRIBUTION	Northeast	CROSSWINDS C & D	142,276		116,654	51,536	25,446	10,446	23,640	0	0	25,841	0	25,841	0	25,841	100.0%
DISTRIBUTION	Northeast	DISTRIBUTION DRIVE CENTER #1	210,000		0	0	0	0	0	0	12,000	0	0	0	0	0	100.0%
DISTRIBUTION	Northeast	EISENHAUER 35 BUSINESS PARK 1-2	295,200		0	0	32,843	0	0	0	0	0	0	0	0	0	100.0%
DISTRIBUTION	Northeast	EISENHAUER 35 BUSINESS PARK 3	98,400		0	0	0	0	98,400	38,979	0	0	0	0	0	0	100.0%
DISTRIBUTION	Northeast	EISENHAUER 35 BUSINESS PARK 4	196,800		0	0	0	0	0	0	0	0	0	0	0	0	100.0%
DISTRIBUTION	Northeast	EISENHAUER 35 BUSINESS PARK 5	74,000			17,000	0	0	0	0	0	0	0	0	0	0	100.0%
DISTRIBUTION	Northeast	EISENHAUER 35 BUSINESS PARK 6	74,000			49,000	0	0	0	0	0	0	49,000	0	0	0	100.0%
DISTRIBUTION	Northeast	EISENHAUER 35 BUSINESS PARK 7	96,800			96,800	96,800	0	0	0	0	0	0	0	44,000	(44,000)	54.5%
DISTRIBUTION	Northeast	EISENHAUER POINT BUSINESS PARK 1	133,263	133,263											0	133,263	100.0%
DISTRIBUTION	Northeast	EISENHAUER POINT BUSINESS PARK 2	67,977	67,977											0	32,989	48.5%
DISTRIBUTION	Northeast	ENTERPRISE INDUSTRIAL PARK 1	315,362										134,713	53,011	0	53,011	100.0%
DISTRIBUTION	Northeast	ENTERPRISE INDUSTRIAL PARK 2	324,812											284,000	205,000	79,000	36.9%
DISTRIBUTION	Northeast	GREEN MTN. BUS. PARK 1	116,102		0	0	0	0	0	0	0	0	76,000	0	0	0	100.0%
DISTRIBUTION	Northeast	GREEN MTN. BUS. PARK 2	125,920		0	0	0	48,300	48,300	48,300	48,484	0	0	0	0	0	100.0%
DISTRIBUTION	Northeast	GREEN MTN. BUS. PARK 3	72,726		0	0	0	0	0	0	0	0	21,855	0	0	0	100.0%
DISTRIBUTION	Northeast	GREEN MTN. BUS. PARK 4	38,951		0	0	0	0	0	0	0	0	0	0	0	0	100.0%
DISTRIBUTION	Northeast	GREEN MTN. BUS. PARK 5	24,421		0	0	0	0	0	0	0	0	0	0	24,421	(24,421)	0.0%
DISTRIBUTION	Northeast	GREEN MTN. BUS. PARK 6	20,376		0	0	0	0	0	0	0	0	0	0	0	0	100.0%
DISTRIBUTION	Northeast	GREEN MTN. BUS. PARK 7	94,562		0	0	0	0	0	0	0	0	0	0	0	0	100.0%
DISTRIBUTION	Northeast	GREEN MTN. BUS. PARK 9	130,707				91,428	91,428	39,118	39,118	39,118	0	0	0	0	0	100.0%
DISTRIBUTION	Northeast	I-35-3	48,600		0	0	5,223	6,769	5,751	3,085	3,085	0	0	0	0	0	100.0%
DISTRIBUTION	Northeast	I-35-4	103,950		0	0	11,172	14,477	12,301	6,599	6,599	0	0	0	0	0	100.0%

Cavender & Hill
PROPERTIES, INC.
Industrial Market Survey
2016 Year End

TYPE	SUBMKT	PROJECT	RSF	NEW INVENTORY	VACANT 12/31/06	VACANT 12/31/07	VACANT 12/31/08	VACANT 12/31/09	VACANT 12/31/10	VACANT 12/31/11	VACANT 12/31/12	VACANT 12/31/13	VACANT 12/31/14	VACANT 12/31/15	VACANT 12/31/16	NET ABSORPTION	%OCCUPIED
DISTRIBUTION	Northeast	I-35-5	48,837		0	0	5,249	6,802	5,779	3,100	3,100	0	0	0	0	0	100.0%
DISTRIBUTION	Northeast	I-35-6	45,180		0	0	4,856	6,292	5,347	2,868	2,868	0	14,800	0	0	0	100.0%
DISTRIBUTION	Northeast	I-35-7	150,000		0	0	16,122	20,891	17,751	9,522	9,522	0	31,000	0	0	0	100.0%
DISTRIBUTION	Northeast	I-35-8	50,400		0	0	5,417	7,019	5,964	3,199	3,199	0	0	0	0	0	100.0%
DISTRIBUTION	Northeast	IH35 BUSINESS CENTER 1-4	192,982		3,000	16,064	59,446	50,410	35,495	15,600	18,950	17,564	45,053	18,250	20,263	(2,013)	89.5%
DISTRIBUTION	Northeast	INDUSTRY PARK DIST. CTR. 1	85,800		0	0	0	0	0	0	0	0	0	0	0	0	100.0%
DISTRIBUTION	Northeast	INDUSTRY PARK DIST. CTR. 2	128,000		0	0	0	0	0	0	0	0	0	0	0	0	100.0%
DISTRIBUTION	Northeast	INDUSTRY PARK DIST. CTR. 3	118,800		0	0	0	0	0	0	0	0	0	0	0	0	100.0%
DISTRIBUTION	Northeast	INDUSTRY PARK DIST. CTR. 4	100,000		0	0	26,417	11,836	0	0	0	0	9,250	0	0	0	100.0%
DISTRIBUTION	Northeast	INDUSTRY PARK DIST. CTR. 5	133,125		0	0	35,167	15,757	0	0	0	0	0	0	0	0	100.0%
DISTRIBUTION	Northeast	INDUSTRY PARK DIST. CTR. 6	83,692		0	0	22,109	9,906	0	0	0	0	0	0	0	0	100.0%
DISTRIBUTION	Northeast	INDUSTRY PARK DIST. CTR. 9	112,000		0	0	0	0	0	0	0	0	0	0	0	0	100.0%
DISTRIBUTION	Northeast	INTERCHANGE NORTH 1	88,875				88,875	26,875	26,875	26,875	0	0	0	0	0	0	100.0%
DISTRIBUTION	Northeast	INTERCHANGE PARK 1	72,000		14,400	14,400	0	0	0	15,580	15,580	15,580	0	15,580	15,580	0	78.4%
DISTRIBUTION	Northeast	INTERCHANGE PARK 2	137,500		31,750	0	0	0	0	43,250	0	0	0	0	0	0	100.0%
DISTRIBUTION	Northeast	INTERCHANGE PARKWAY	92,000		13,006	16,800	13,006	23,000	23,000	23,000	0	0	0	0	11,200	(11,200)	87.8%
DISTRIBUTION	Northeast	LANDMARK I	94,500		0	0	0	0	0	0	0	0	14,175	0	0	0	100.0%
DISTRIBUTION	Northeast	LANDMARK SIX	69,300		7,700	0	23,100	15,400	0	15,400	15,400	15,400	24,352	0	3,850	(3,850)	94.4%
DISTRIBUTION	Northeast	MACRO DISTRIBUTION	93,756		0	0	0	0	0	0	0	0	0	0	0	0	100.0%
DISTRIBUTION	Northeast	MACRO INDUSTRIAL PARK 1	105,000		0	0	0	60,000	30,000	0	0	0	0	0	0	0	100.0%
DISTRIBUTION	Northeast	MACRO INDUSTRIAL PARK 2	161,250		26,741	0	0	0	21,767	7,995	0	7,995	0	0	0	0	100.0%
DISTRIBUTION	Northeast	MACRO INDUSTRIAL PARK 3	96,277		15,966	0	0	0	12,996	4,773	0	4,773	0	0	27,300	(27,300)	71.6%
DISTRIBUTION	Northeast	MACRO INDUSTRIAL PARK 4	131,738		21,847	0	0	0	17,783	6,532	0	6,532	13,200	0	0	0	100.0%
DISTRIBUTION	Northeast	NICKASE BUSINESS CENTER	40,000					0	40,000	40,000	0	0	40,000	40,000	0	40,000	100.0%
DISTRIBUTION	Northeast	PAN AM DISTRIBUTION I-III	360,130		0	16,000	50,840	46,652	88,500	5,412	39,152	144,942	61,763	5,208	22,008	(16,800)	93.9%
DISTRIBUTION	Northeast	PAN AM DISTRIBUTION IV	226,067		0	0	0	0	16,000	16,000	0	0	32,770	16,000	32,770	32,770	85.5%
DISTRIBUTION	Northeast	PERRIN CREEK 01	70,400		0	0	0	0	0	0	0	0	0	0	0	0	100.0%
DISTRIBUTION	Northeast	PERRIN CREEK 02	96,600		0	0	0	0	0	0	30,436	0	24,801	0	0	0	100.0%
DISTRIBUTION	Northeast	PERRIN CREEK 03	38,350		0	0	0	0	0	0	0	0	12,800	12,800	0	12,800	100.0%
DISTRIBUTION	Northeast	PERRIN CREEK 04	33,600		0	0	0	0	0	0	0	0	0	0	0	0	100.0%
DISTRIBUTION	Northeast	PERRIN CREEK 05	33,600		0	0	0	0	0	0	0	0	0	0	0	0	100.0%
DISTRIBUTION	Northeast	PERRIN CREEK 06	64,000		12,800	0	0	0	0	0	0	0	51,200	0	0	0	100.0%
DISTRIBUTION	Northeast	PERRIN CREEK 07	55,720		0	0	0	0	0	0	0	0	0	0	0	0	100.0%
DISTRIBUTION	Northeast	PERRIN CREEK 08	137,986		0	0	0	0	0	0	0	0	0	0	0	0	100.0%
DISTRIBUTION	Northeast	PERRIN CREEK 08A	171,453		0	0	0	0	0	0	0	0	0	0	0	0	100.0%
DISTRIBUTION	Northeast	PERRIN CREEK 10	40,015		32,000	32,000	0	0	0	0	0	0	0	0	0	0	100.0%
DISTRIBUTION	Northeast	PERRIN CREEK 11	54,000		0	0	0	0	0	0	0	0	0	0	0	0	100.0%
DISTRIBUTION	Northeast	PERRIN CREEK 12	74,100		0	0	0	0	24,050	24,050	0	0	0	0	0	0	100.0%
DISTRIBUTION	Northeast	RITTIMAN DISTRIBUTION CENTER	172,050		22,500	0	19,950	37,500	54,600	38,825	22,500	0	25,950	0	0	0	100.0%
DISTRIBUTION	Northeast	RITTIMAN EAST 08	112,000		0	0	0	0	0	0	0	0	0	0	0	0	100.0%
DISTRIBUTION	Northeast	RITTIMAN EAST 09-15	589,518		90,400	98,850	124,987	37,500	27,500	21,250	0	16,250	0	0	30,000	(30,000)	94.9%
DISTRIBUTION	Northeast	RITTIMAN EAST 17	282,134		0	0	0	0	20,089	37,308	0	0	0	0	0	0	100.0%
DISTRIBUTION	Northeast	RITTIMAN EAST 18	308,000		0	0	0	0	21,911	40,692	0	0	0	0	0	0	100.0%
DISTRIBUTION	Northeast	RITTIMAN EAST 27 & 28	41,856		0	0	16,200	10,800	0	5,928	14,928	9,000	9,000	0	0	0	100.0%
DISTRIBUTION	Northeast	RITTIMAN WEST 01-05	628,025		120,000	30,000	0	66,211	30,000	15,750	48,939	0	39,863	26,393	0	26,393	100.0%
DISTRIBUTION	Northeast	RITTIMAN WEST 06	75,150		22,752	8,044	2,298	0	0	11,491	9,652	10,801	0	5,400	5,400	0	92.8%
DISTRIBUTION	Northeast	RITTIMAN WEST 07	72,000		21,798	7,706	2,202	0	0	11,009	9,248	10,349	0	0	0	0	100.0%

Cavender & Hill
 PROPERTIES, INC.
 Industrial Market Survey
 2016 Year End

TYPE	SUBMKT	PROJECT	RSF	NEW INVENTORY	VACANT 12/31/06	VACANT 12/31/07	VACANT 12/31/08	VACANT 12/31/09	VACANT 12/31/10	VACANT 12/31/11	VACANT 12/31/12	VACANT 12/31/13	VACANT 12/31/14	VACANT 12/31/15	VACANT 12/31/16	NET ABSORPTION	%OCCUPIED
DISTRIBUTION	Northeast	SAN ANTONIO 01, 02 & 09	148,224		0	0	0	51,686	37,199	0	0	0	11,287	0	0	0	100.0%
DISTRIBUTION	Northeast	SAN ANTONIO 10	57,700		0	0	0	0	14,430	43,290	0	0	0	0	0	0	100.0%
DISTRIBUTION	Northeast	SAN ANTONIO DIST. 14-15	123,250		0	16,612	0	0	0	0	0	83,250	0	0	0	0	100.0%
DISTRIBUTION	Northeast	SAN ANTONIO DIST. 16	23,660		0	0	0	0	0	0	0	0	0	0	0	0	100.0%
DISTRIBUTION	Northeast	TRICOUNTY 35 BUSINESS PARK I-A	68,960		0	0	16,000	16,000	16,000	0	0	0	0	0	0	0	100.0%
DISTRIBUTION	Northeast	TRICOUNTY 35 BUSINESS PARK I-B	155,567		0	0	0	14,349	0	0	0	0	0	0	0	0	100.0%
DISTRIBUTION	Northeast	TRICOUNTY 35 BUSINESS PARK II-A	40,000		0	0	0	0	0	0	0	0	0	0	0	0	100.0%
DISTRIBUTION	Northeast	TRICOUNTY 35 BUSINESS PARK II-B	227,500		142,500	142,500	0	0	0	0	0	0	0	0	0	0	100.0%
DISTRIBUTION	Northeast	TRICOUNTY DISTRIBUTION CENTER 1	244,800		0	0	0	0	0	0	48,000	40,000	0	0	0	0	100.0%
DISTRIBUTION	Northeast	TRICOUNTY DISTRIBUTION CENTER 2	160,000		0	0	32,000	0	0	0	0	0	0	0	0	0	100.0%
DISTRIBUTION	Northeast	TRICOUNTY DISTRIBUTION CENTER 3	204,600		0	0	0	0	0	0	55,025	0	0	0	0	0	100.0%
DISTRIBUTION	Northeast	VERDE ENTERPRISE 1	88,000			72,000	72,000	32,000	32,000	16,000	16,000	0	0	0	0	0	100.0%
DISTRIBUTION	Northeast	VERDE ENTERPRISE 2	96,000			96,000	96,000	96,000	96,000	0	0	0	0	0	0	0	100.0%
DISTRIBUTION	Northeast	WOODLAKE CENTER 1-2	82,734		0	0	0	0	0	26,227	26,227	0	0	0	0	0	100.0%
	Northeast Total		12,874,957	415,104	1,074,261	969,289	1,224,337	1,236,731	1,284,989	1,002,374	655,516	466,847	824,675	649,629	588,020	476,713	95.4%
DISTRIBUTION	Northwest	NORTHWEST BUSINESS PARK	251,125		0	20,000	61,056	73,769	105,374	88,205	16,107	61,577	46,979	44,877	30,877	14,000	87.7%
DISTRIBUTION	Northwest	TRADESMAN CENTRE	32,400			10,226	0	0	0	0	0	10,000	10,000	0	7,503	(7,503)	76.8%
DISTRIBUTION	Northwest	WEST LOOP BUSINESS PARK I	145,394		0	0	20,221	42,521	49,668	31,193	80,877	17,213	17,213	19,555	24,805	(5,250)	82.9%
	Northwest Total		428,919	-	0	30,226	81,277	116,290	155,042	119,398	96,984	88,790	74,192	64,432	63,185	1,247	85.3%
DISTRIBUTION	Southwest	202 E TAYMAN	275,000					275,000	202,530	0	43,476	43,476	43,486	43,486	0	43,486	100.0%
DISTRIBUTION	Southwest	302 E TAYMAN	360,000			45,000	45,000	45,000	45,000	45,000	0	0	0	0	0	0	100.0%
DISTRIBUTION	Southwest	903 BILLY MITCHELL 1	32,400		32,400	32,400	32,400	26,400	26,400	26,400	26,400	26,400	26,400	19,100	7,700	11,400	76.2%
DISTRIBUTION	Southwest	907 BILLY MITCHELL 2	43,200		30,900	0	0	0	0	0	0	0	0	0	0	0	100.0%
DISTRIBUTION	Southwest	913 BILLY MITCHELL 3	108,800		83,200	83,200	71,200	38,400	0	12,800	0	0	0	25,600	13,700	11,900	87.4%
DISTRIBUTION	Southwest	919 BILLY MITCHELL 4	43,200		43,200	43,200	43,200	37,800	33,000	33,000	33,600	33,600	38,400	32,900	0	32,900	100.0%
DISTRIBUTION	Southwest	927 BILLY MITCHELL 5	102,400		102,400	102,400	0	0	0	0	0	0	0	0	0	0	100.0%
	Southwest Total		965,000	-	292,100	306,200	191,800	422,600	306,930	117,200	102,876	103,476	108,286	121,086	21,400	99,686	97.8%
DISTRIBUTION	West	1410 CALLAGHAN	193,908		0	0	0	0	0	0	0	0	193,908	0	0	0	100.0%
DISTRIBUTION	West	1803 GRANDSTAND	133,500			37,500	37,500	37,500	22,500	0	0	0	0	0	0	0	100.0%
DISTRIBUTION	West	655 RICHLAND HILLS	120,473		56,000	0	0	0	0	0	80,000	0	0	0	0	0	100.0%
DISTRIBUTION	West	ALAMO DISTRIBUTION CENTER I	132,565		0	0	0	14,833	11,156	50,372	17,400	0	0	0	43,339	(43,339)	67.3%
DISTRIBUTION	West	ALAMO DISTRIBUTION CENTER II	120,200		0	0	0	0	0	0	0	0	0	0	0	0	100.0%
DISTRIBUTION	West	ALAMO RIDGE BUSINESS PARK 1	96,324										96,324	45,448	15,456	29,992	84.0%
DISTRIBUTION	West	ALAMO RIDGE BUSINESS PARK 2	61,744										61,744	0	0	0	100.0%
DISTRIBUTION	West	FAIRGROUNDS I	115,000		28,388	0	13,076	18,588	0	0	0	15,312	15,312	0	7,800	(7,800)	93.2%
DISTRIBUTION	West	FAIRGROUNDS II	115,150		7,350	9,800	9,800	11,024	11,638	11,638	0	0	0	0	0	0	100.0%
DISTRIBUTION	West	INTERWEST BUSINESS CENTER	219,244		9,400	12,800	18,800	27,420	84,320	58,320	56,278	12,480	32,977	9,480	0	9,480	100.0%
	West Total		1,308,108	-	101,138	60,100	79,176	109,365	129,614	120,330	153,678	27,792	400,265	54,928	66,595	(11,667)	94.9%
DISTRIBUTION Total			20,426,324	780,241	1,706,277	1,745,515	2,014,456	2,475,117	2,428,230	1,703,540	1,348,969	1,011,611	1,543,935	953,813	1,209,308	524,746	94.1%

Cavender & Hill
PROPERTIES, INC.
Industrial Market Survey
2016 Year End

TYPE	SUBMKT	PROJECT	RSF	NEW INVENTORY	VACANT 12/31/06	VACANT 12/31/07	VACANT 12/31/08	VACANT 12/31/09	VACANT 12/31/10	VACANT 12/31/11	VACANT 12/31/12	VACANT 12/31/13	VACANT 12/31/14	VACANT 12/31/15	VACANT 12/31/16	NET ABSORPTION	%OCCUPIED
SVC CTR	Northcentral	1051 E. NAKOMA	22,165		0	0	0	5,500	1,700	14,800	14,800	0	0	0	0	0	100.0%
SVC CTR	Northcentral	2448 BROCKTON	26,700		0	0	0	0	11,200	0	0	0	0	15,500	0	15,500	100.0%
SVC CTR	Northcentral	300 RAMSEY	65,313		5,046	7,285	15,767	16,624	6,951	7,969	0	1,960	3,270	5,984	12,847	(6,863)	80.3%
SVC CTR	Northcentral	400 RAMSEY	59,795		4,696	0	0	0	0	12,336	10,366	6,970	6,969	5,237	0	5,237	100.0%
SVC CTR	Northcentral	401 ISOM	83,500		10,000	3,600	13,145	12,936	8,584	16,000	28,234	27,700	25,000	33,150	12,525	20,625	85.0%
SVC CTR	Northcentral	431 & 435 ISOM	94,350		10,000	22,900	21,675	20,400	21,675	21,675	15,300	8,150	12,000	10,200	11,322	(1,122)	88.0%
SVC CTR	Northcentral	600 SANDAU	21,500		4,452	0	4,765	7,333	2,700	2,700	4,943	2,866	1,662	0	0	0	100.0%
SVC CTR	Northcentral	754 ISOM	46,575		2,363	3,780	3,780	17,837	17,837	8,387	8,387	4,607	14,175	4,607	9,568	90.1%	
SVC CTR	Northcentral	9315 BROADWAY	31,600				31,600	31,600	31,600	31,600	23,704	23,704	23,704	23,704	23,704	0	25.0%
SVC CTR	Northcentral	9901 BROADWAY	47,000		0	3,000	6,000	12,000	9,000	9,000	3,000	9,000	20,730	17,730	0	17,730	100.0%
SVC CTR	Northcentral	AIRPORT BUSINESS CENTER	34,952		0	0	0	18,000	29,137	12,698	12,698	3,200	0	0	0	0	100.0%
SVC CTR	Northcentral	ARION 01, 02 & 03	46,080		0	0	0	0	0	0	0	8,040	0	0	10,800	(10,800)	76.6%
SVC CTR	Northcentral	ARION 05, 06 & 07	44,025		0	15,000	7,500	0	0	0	0	0	0	0	0	0	100.0%
SVC CTR	Northcentral	ARION 17	40,424		30,380	0	0	10,044	3,407	0	17,860	0	0	0	0	0	100.0%
SVC CTR	Northcentral	ARION 18	19,917				1,856	0	0	0	0	0	0	0	0	0	100.0%
SVC CTR	Northcentral	BLOSSOM BUS. PARK I	137,236		13,860	10,600	14,038	6,138	23,200	12,649	27,629	11,900	19,060	16,536	16,252	284	88.2%
SVC CTR	Northcentral	BLOSSOM BUS. PARK II	137,279		40,700	28,884	15,480	26,080	27,520	31,035	28,148	54,344	49,297	39,989	28,097	11,892	79.5%
SVC CTR	Northcentral	BLOSSOM COVE	165,461		3,912	3,960	1,872	0	22,820	27,756	21,250	30,320	39,895	2,900	2,907	(7)	98.2%
SVC CTR	Northcentral	BROADWAY & BITTERS	78,102		24,465	7,810	15,112	15,125	10,500	11,375	14,092	10,840	7,641	3,930	10,000	(6,070)	87.2%
SVC CTR	Northcentral	BROADWAY TRADE CENTER	120,958		32,383	18,208	13,305	10,855	14,560	18,934	8,500	19,213	9,315	6,870	9,354	(2,484)	92.3%
SVC CTR	Northcentral	BROOKHOLLOW BUSINESS PARK A	72,083		3,035	0	6,000	0	25,524	25,524	13,900	28,885	8,000	0	0	0	100.0%
SVC CTR	Northcentral	BROOKHOLLOW BUSINESS PARK B	41,000		0	7,152	7,000	7,152	12,080	0	5,780	0	0	0	0	0	100.0%
SVC CTR	Northcentral	BROOKHOLLOW OFFICE PARK	68,000		0	5,500	13,000	20,710	37,721	26,125	18,500	9,652	13,000	0	0	0	100.0%
SVC CTR	Northcentral	EAST NAKOMA BUSINESS PARK I	25,612		0	7,328	1,330	1,330	1,330	1,330	1,330	1,500	0	0	1,330	(1,330)	94.8%
SVC CTR	Northcentral	EAST NAKOMA BUSINESS PARK II	14,656		7,300	0	0	0	3,575	7,350	7,328	0	0	1,330	3,825	(2,495)	73.9%
SVC CTR	Northcentral	FREEDOM CENTER	59,996		8,075	4,900	6,571	18,825	20,048	23,175	20,000	8,700	2,400	4,100	7,911	(3,811)	86.8%
SVC CTR	Northcentral	INTERPARK 13	30,720		0	0	0	0	0	0	0	0	0	0	0	0	100.0%
SVC CTR	Northcentral	INTERPARK 4-12	201,369		27,700	16,877	11,000	27,379	24,104	26,327	5,200	12,415	15,700	5,200	0	5,200	100.0%
SVC CTR	Northcentral	ISOM TRADE CENTER	59,301		10,242	3,440	7,774	17,014	13,400	6,041	7,343	9,481	9,999	9,829	6,119	3,710	89.7%
SVC CTR	Northcentral	METRO INDUSTRIAL PARK	46,500		7,200	0	11,800	4,800	14,600	9,900	0	3,600	6,300	4,800	0	4,800	100.0%
SVC CTR	Northcentral	METROPOLITAN BUS. CENTER	26,586		0	0	0	7,680	15,398	3,300	3,300	3,300	3,300	0	6,148	(6,148)	76.9%
SVC CTR	Northcentral	NORTHBROOK	105,963		7,500	2,000	1,945	29,000	22,000	30,000	30,000	18,885	25,001	12,440	8,817	3,623	91.7%
SVC CTR	Northcentral	NORTHCROSS BUS. PARK	41,904		2,300	4,316	2,974	2,974	9,404	9,404	7,568	4,920	3,530	2,300	0	2,300	100.0%
SVC CTR	Northcentral	THOUSAND OAKS BUSINESS PARK 1	36,148								25,769	4,510	0	3,409	0	3,409	100.0%
SVC CTR	Northcentral	WETMORE BUSINESS CENTER 1	43,200		13,939	24,300	10,542	10,917	3,525	0	3,525	3,525	0	0	0	0	100.0%
SVC CTR	Northcentral	WETMORE BUSINESS CENTER 5	33,750			20,250	9,000	9,000	4,500	0	0	11,250	11,250	0	4,500	(4,500)	86.7%
		Northcentral Total	2,229,720	-	269,548	221,090	254,831	367,253	449,600	407,390	388,454	343,437	333,023	239,313	181,065	58,248	91.9%
SVC CTR	Northeast	10927 WYE DRIVE	26,000		0	3,280	0	3,120	3,200	0	3,233	0	3,300	0	0	0	100.0%
SVC CTR	Northeast	ALAMO BUSINESS PARK	48,431										19,432	21,860	15,443	6,417	68.1%
SVC CTR	Northeast	CENTERGATE	68,286		0	19,503	19,503	9,500	24,075	0	0	0	0	0	1,425	(1,425)	97.9%
SVC CTR	Northeast	DELTA WYE PLAZA	44,652		6,008	10,395	3,000	15,805	19,543	9,138	10,395	10,395	13,250	8,922	0	8,922	100.0%
SVC CTR	Northeast	IH35 BUSINESS CENTER I	30,758		11,500	0	0	0	5,753	1,802	15,300	6,899	5,856	4,028	0	4,028	100.0%
SVC CTR	Northeast	NACOGDOCHES ROAD BUS. PARK	34,130		0	0	0	0	0	0	0	0	0	0	0	0	100.0%
SVC CTR	Northeast	O'CONNOR ROAD BUS. PARK	150,091		19,500	14,288	60,569	34,200	19,688	13,200	17,100	14,888	4,800	20,801	15,009	5,792	90.0%
SVC CTR	Northeast	RANDOLPH BUSINESS PARK	139,612		16,500	21,837	34,637	9,787	18,487	18,162	28,962	35,824	31,324	22,437	20,942	1,495	85.0%
SVC CTR	Northeast	RITTIMAN EAST 22-24	81,709		21,328	13,000	13,000	0	8,200	13,000	10,500	9,600	8,200	33,730	7,950	25,780	90.3%
SVC CTR	Northeast	SALADO CREEK BUSINESS PARK I	52,947		9,000	7,959	6,700	9,954	15,387	16,056	15,000	0	10,000	0	0	0	100.0%

Cavender & Hill
 PROPERTIES, INC.
 Industrial Market Survey
 2016 Year End

TYPE	SUBMKT	PROJECT	RSF	NEW INVENTORY	VACANT 12/31/06	VACANT 12/31/07	VACANT 12/31/08	VACANT 12/31/09	VACANT 12/31/10	VACANT 12/31/11	VACANT 12/31/12	VACANT 12/31/13	VACANT 12/31/14	VACANT 12/31/15	VACANT 12/31/16	NET ABSORPTION	%OCCUPIED	
SVC CTR	Northeast	SALADO CREEK BUSINESS PARK II	69,264		9,000	9,000	5,500	9,834	38,000	42,183	36,583	16,000	11,500	0	0	0	100.0%	
SVC CTR	Northeast	SAN ANTONIO DIST. 10-13	203,750		0	0	3,670	11,470	25,982	46,344	30,528	23,270	4,800	33,932	38,712	(4,780)	81.0%	
SVC CTR	Northeast	TITAN TRICOUNTY 1	23,000			0	0	0	0	0	0	0	0	0	0	0	100.0%	
SVC CTR	Northeast	TITAN TRICOUNTY 2	41,000			0	0	0	0	0	0	0	24,000	0	0	0	100.0%	
SVC CTR	Northeast	TITAN TRICOUNTY 3	32,400			0	0	0	0	0	0	0	0	0	0	0	100.0%	
	Northeast Total		1,046,030	-	92,836	99,262	146,579	103,670	178,315	159,885	167,601	116,876	136,462	145,710	99,481	46,229	90.5%	
SVC CTR	Northwest	7114 ECKHERT ROAD	37,940		1,697	1,000	0	9,000	9,200	2,400	2,400	0	1,310	11,310	8,000	3,310	78.9%	
SVC CTR	Northwest	BANDERA ROAD BUSINESS PARK	112,500		16,875	22,500	0	16,000	6,000	0	0	1,500	0	6,000	0	6,000	100.0%	
SVC CTR	Northwest	HUEBNER ROAD BUSINESS PARK	45,854		2,200	9,200	21,381	19,176	4,500	0	5,459	5,459	3,742	4,500	6,735	5,582	1,153	87.8%
SVC CTR	Northwest	MAINLAND ROAD BUSINESS CENTER	40,750		8,360	5,270	6,089	2,610	10,696	9,550	0	4,079	2,610	2,135	0	2,135	100.0%	
SVC CTR	Northwest	MEDTECH	36,605		13,078	15,828	6,149	0	2,225	0	0	0	0	0	3,000	(3,000)	91.8%	
SVC CTR	Northwest	NORTHWEST 10 PLAZA	57,300		4,000	4,000	0	0	0	33,000	55,000	54,438	42,538	42,538	27,000	15,538	52.9%	
SVC CTR	Northwest	NORTHWEST BUSINESS CENTER	89,094		12,000	10,590	19,900	31,290	31,290	25,832	25,832	25,832	24,884	18,389	10,784	7,605	87.9%	
SVC CTR	Northwest	NORTHWEST BUSINESS CENTER II	18,000		0	0	0	0	0	0	0	0	0	0	0	0	100.0%	
SVC CTR	Northwest	NORTHWEST CORPORATE CENTER	98,828		6,570	2,690	4,970	5,430	13,818	0	10,456	6,122	3,632	6,098	3,460	2,638	96.5%	
SVC CTR	Northwest	ONE DE ZAVALA CENTER	113,293		0	0	3,061	0	15,009	30,068	18,566	5,923	27,328	12,000	0	12,000	100.0%	
SVC CTR	Northwest	UNIVERSITY BUSINESS PARK	90,293		0	7,229	5,499	26,272	11,888	14,068	1,959	1,960	3,810	3,925	5,730	(1,805)	93.7%	
SVC CTR	Northwest	UNIVERSITY HEIGHTS BUSINESS PARK	68,400		16,242	0	7,600	0	0	3,974	0	0	0	2,992	0	2,992	100.0%	
SVC CTR	Northwest	UNIVERSITY PARK	39,706		14,112	0	0	5,017	14,168	9,251	0	0	0	0	0	0	100.0%	
SVC CTR	Northwest	WESTLOOP BUSINESS PARK II	170,453		25,805	44,317	45,386	54,624	68,713	52,573	47,684	14,904	20,488	7,000	23,007	(16,007)	86.5%	
	Northwest Total		1,019,016	-	120,939	122,624	120,035	169,419	187,507	180,716	167,356	120,217	130,342	119,122	86,563	32,559	91.5%	
SVC CTR	West	ALAMO DOWNS COMMERCE	27,987		5,193	2,080	8,547	4,756	12,723	14,092	0	7,505	7,505	4,686	9,606	(4,920)	65.7%	
SVC CTR	West	ALAMO DOWNS WESTTECH	56,525		5,875	22,610	18,982	20,085	18,982	21,582	36,037	5,092	5,092	5,092	3,217	1,875	94.3%	
SVC CTR	West	LEON VALLEY BUSINESS CENTER	57,500				28,500	30,000	30,000	30,000	4,500	1,500	1,500	3,000	0	3,000	100.0%	
SVC CTR	West	NORTHWEST BUSINESS CENTER - A.D.	87,042		7,200	10,445	7,381	22,724	44,736	42,174	35,618	39,719	33,792	13,181	2,636	10,545	97.0%	
SVC CTR	West	WESTWAY	59,850		16,399	3,500	10,439	13,880	13,140	4,881	31,193	4,226	6,760	27,631	23,856	3,775	60.1%	
	West Total		288,904	-	34,667	38,635	45,349	89,945	119,581	112,729	107,348	58,042	54,649	53,590	39,315	14,275	86.4%	
SVC CTR Total			4,583,670	-	517,990	481,611	566,794	730,287	935,003	860,720	830,759	638,572	654,476	557,735	406,424	151,311	91.1%	
Grand Total			25,009,994	780,241	2,224,267	2,227,126	2,581,250	3,205,404	3,363,233	2,564,260	2,179,728	1,650,183	2,198,411	1,511,548	1,615,732	676,057	93.5%	