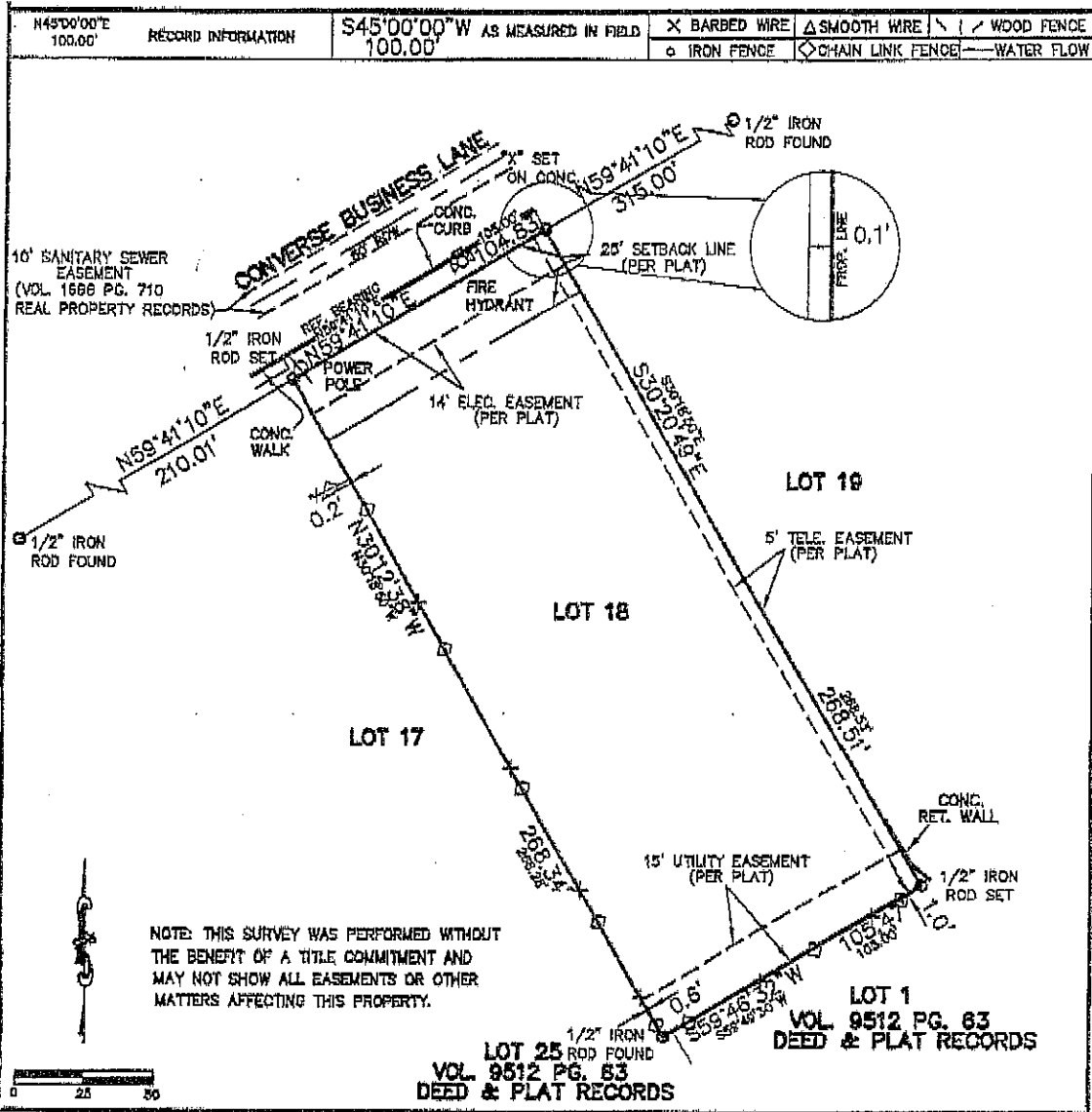


# EXHIBIT A




I, A REGISTERED PROFESSIONAL LAND SURVEYOR IN THE STATE OF TEXAS, DO HEREBY CERTIFY THAT THE ABOVE PLAT IS TRUE AND CORRECT ACCORDING TO AN ACTUAL SURVEY MADE ON THE GROUND UNDER MY SUPERVISION, OF THE PROPERTY DESCRIBED HEREON. I FURTHER CERTIFY THAT ENCROACHMENTS, EASEMENTS AND RIGHT-OF-WAYS VISIBLE ON SITE ARE SHOWN HEREON. SETBACKS AND EASEMENTS SHOWN ARE FROM RECORDED COUNTY DOCUMENT RECORDS. MUNICIPAL RESTRICTIONS ARE NOT SHOWN. COPYRIGHT © 2008 STEPHEN G. COOK ENGINEERING, INC. ALL RIGHTS RESERVED

*Stephen G. Cook*  
 STEPHEN G. COOK, R.P.L.S.



LOT(S) 18 BLOCK 1 N.O.S. -  
CONVERSE BUSINESS PARK, UNIT-3, CITY OF CONVERSE VOLUME 9519 PAGE 5  
 OF THE DEED AND PLAT RECORDS OF BEXAR COUNTY, TEXAS.  
 WITNESS MY HAND AND SEAL, THIS 4 DAY OF MARCH, 20 08  
 BUYER -  
 ADDRESS CONVERSE BUSINESS LANE OF NO. -  
 STEPHEN G. COOK, INC. JOB NO. 999-888-435 DRAWN BY: N.A. DISK: CAD/S SURV. BY PA

 **SGC**

12000 STARCREST, SUITE 107  
 STEPHEN G. COOK ENGINEERING, INC. SAN ANTONIO, TEXAS 78247-4117  
 REGISTERED LAND SURVEYORS 210/481-2533 \* FAX: 210/481-2150  
 WWW.SGCE.NET