

**LANDSCAPE ORDINANCE - 60 POINTS REQUIRED**

- 1) BUFFER YARD  
 ADJOINING ZONE TYPE:  
 PROPERTY IS ZONED R-6  
 NORTHWEST PROPERTY IS ZONED G2, MF33  
 SOUTHWEST PROPERTY IS ZONED G2  
 REQ'D BUFFER YARD:  
 NO BUFFER REQUIRED.
- 2) \*STREETSCAPE TREES  
 444 L.F./50' = 9.8 TREES  
 Less 3 existing trees  
 7 TREES PROVIDED  
 Note: Room to plant trees along Redland Road does not exist. There is not a clear definition between R.O.M. and road. Planting trees in this location would be a traffic hazard. These trees were relocated to Jones Maltsburger.
- 3) EXISTING TREES (35 points max.) **35 POINTS**  
 STREET YARD (20 points max.)  
 18" + caliper: 10 x 7 pts. = 70 pts.  
 12" to <18" caliper: 53 x 5 pts. = 265 pts.  
 6" to <12" caliper: 44 x 3 pts. = 292 pts.  
 4" to <6" caliper: 1 x 2 pts. = 2 pts.  
 Subtotal: 610 pts.  
 Less max. pts. @ 100% (20 pts.)  
 Balance 590 pts.  
 50 % credit of remaining balance 295 pts.  
 Total street yard 319 pts.
- OUTSIDE STREET YARD (15 points max.)  
 18" + caliper: 9 x 7 pts./2 = 31.5 pts.  
 12" to <18" caliper: 9 x 5 pts./2 = 22.5 pts.  
 6" to <12" caliper: 45 x 3 pts./2 = 67.5 pts.  
 4" to <6" caliper: 0 x 2 pts./2 = 0 pts.  
 Subtotal: 121.5 pts.  
 Total existing trees 440.5 pts.
- 4) PARKING LOT SHADING **25 POINTS**  
 Parking Lot A  
 35% Shading  
 35% x 34815 SF of Pkg. Lot = 13935.2 SF req'd for Shade  
 13935.2 SF req'd. for Shade/875 SF of Tree = 15.9 Trees  
 Less 10 existing trees  
 9 TREES PROVIDED.
- TOTAL LANDSCAPE ORDINANCE POINTS 60 POINTS**

**TREE PRESERVATION SUMMARY**

TOTAL INCHES: 2505 INCHES  
 25% - 8" + REQUIRED TO BE PRESERVED: 626.25 INCHES  
 INCHES REMOVED: 390" INCHES  
 INCHES PRESERVED: 2115" INCHES  
 % INCHES PRESERVED: 84%

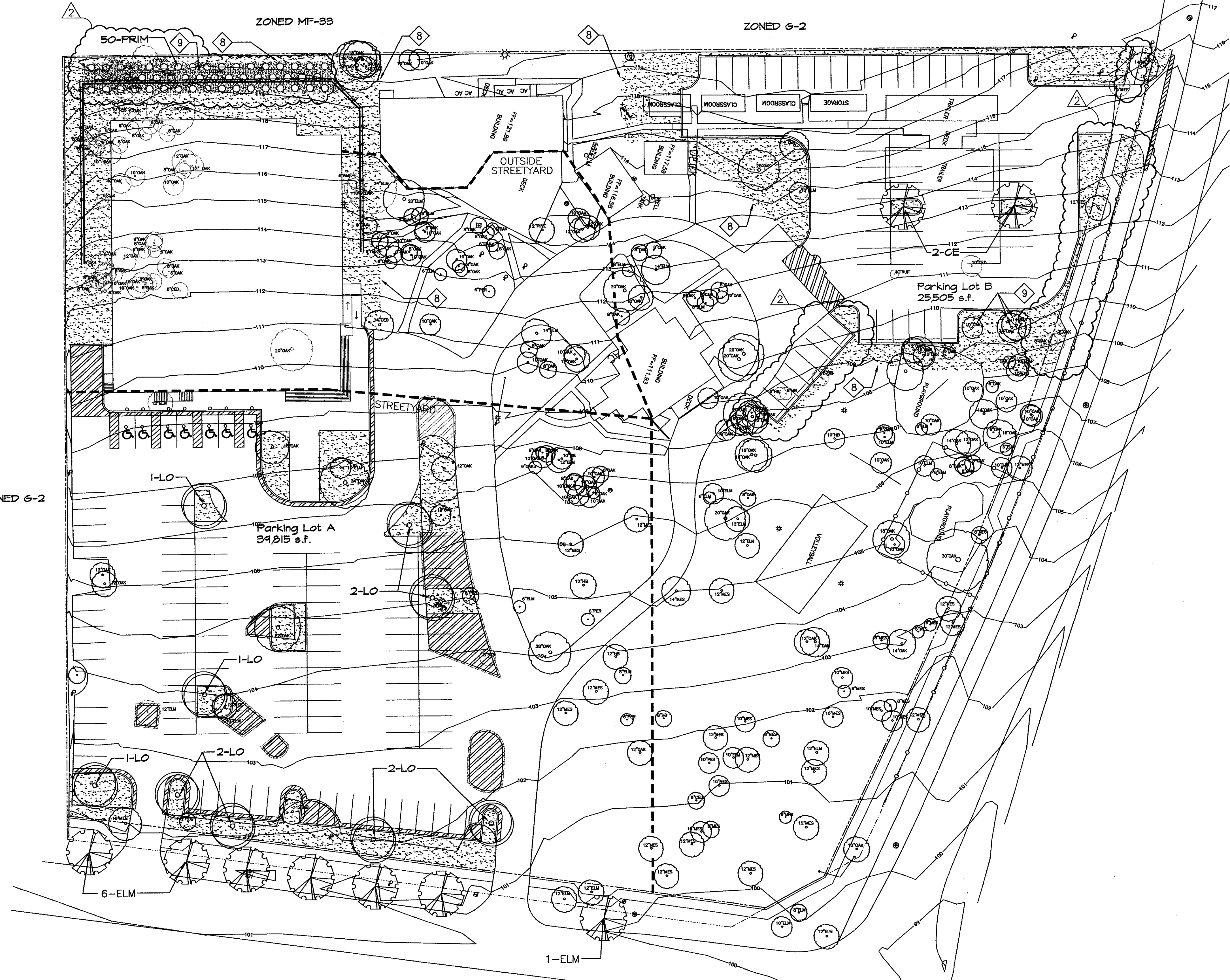
**LEGEND**

- LIVE OAK
- CEDAR ELM
- ST. AUGUSTINE 'RALEIGH' SOLID SOD
- STREET YARD

**PLANTING NOTES: (Keyed Notes)**

- Landscape contractor shall be responsible for making himself familiar with the specifications and all submittal requirements. It is the responsibility of the Landscape contractor to notify the Landscape Architect for site inspections as specified in the specifications. Failure to notify the Landscape Architect does not relieve the contractor from inspection approval and will require the contractor to install/repair work as required for approval at the cost of the contractor. Landscape contractor is to inform Landscape Architect of the start date of work.
- The landscape contractor is to notify Texas One Call (800-245-4545) 12 hours prior to any excavation. Landscape contractor shall be responsible for making himself familiar with all underground utilities, pipes and structures. Irrigation contractor shall take sole responsibility for any cost incurred due to damage of said utilities whether or not Texas One Call is notified.
- Do not willingly proceed with construction as designed when it is obvious that unknown obstruction and/or grade differences exist that may not have been known during design. Such conditions shall be immediately brought to the attention of the Landscape Architect. The Contractor shall assume full responsibility for all necessary revisions due to failure to give such notification.
- The Contractor shall be responsible for any coordination with subcontractors as required to accomplish planting operations.
- If conflicts arise between size of areas and plans, Contractor is to contact Landscape Architect for resolution. Failure to make such conflicts known will result in Contractor's liability to relocate the materials.
- Provide and install 4" clean topsoil in lawn areas.
- Install 4" of shredded pine bark mulch in all bed areas.
- Solid sod to limits of grading. See grading plan.

9 Install 4" deep Texas Blend Rock, 3" diameter minimum, over filter fabric on slope area. Cut filter fabric as required to install shrubs.

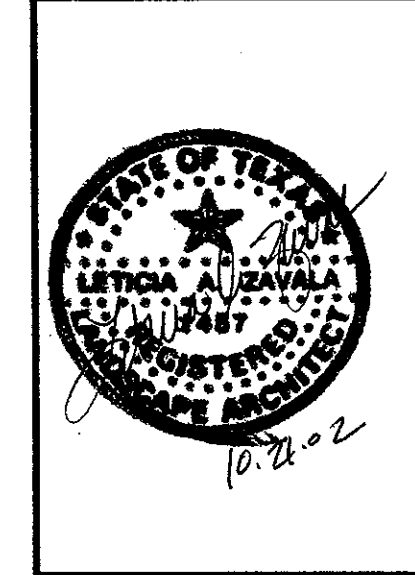


**PLANT SCHEDULE**

KEY	SCIENTIFIC NAME COMMON NAME	CONDITION	REMARKS
<b>TREES</b>			
LO	Quercus virginiana Live Oak	Container	2"-2 1/2" cal. single trunk 10'-12' ht; 4'-6' sprd
CE	Ulmus crassifolia Cedar Elm	Container	2"-2-1/2" cal., single trunk, 11'-13' ht., 5'-7' sprd
<b>SHRUBS</b>			
PRIM	Jasminum mesnyi Primrose Jasmine	5 gal	20" ht, 18" sprd. full, 8' o.c.
<b>LAWN</b>			
	Stenotaphrum secundatum 'Raleigh' Raleigh St. Augustine	S.Y.	solid sod
* Cedar Elms are Streetscape Trees			

REVISIONS:

1	3-31-03
2	7-06-04



SITE PLAN  
 A NEW ACTIVITY CENTER FOR:  
**RIVER CITY COMMUNITY CHURCH**  
 REDLAND  
 SAN ANTONIO, TEXAS

ARCHITECTURAL  
 DESIGN  
 ASSOCIATES, INC.  
 5555 FREDERICKSBURG RD.  
 SUITE 101  
 SAN ANTONIO, TX 78229  
 210-734-3400  
 FAX: 210-734-0219

DRAWN BY: LAZ  
 DATE: 10-21-2002  
 CHECK BY: LAZ  
 PROJ. NO:  
 SCALE: AS NOTED  
 SHEET NO:  
**L-2** OF 4

The Zavala Group  
 Landscape Architecture  
 239 Gazel Drive  
 San Antonio, Texas 78213  
 210-342-4910